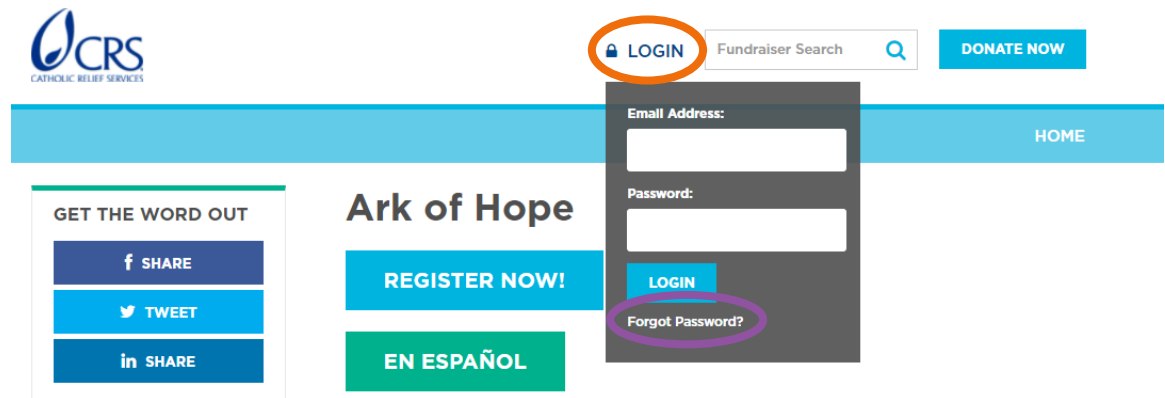


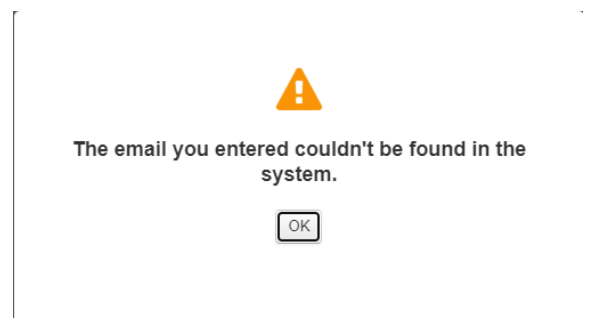
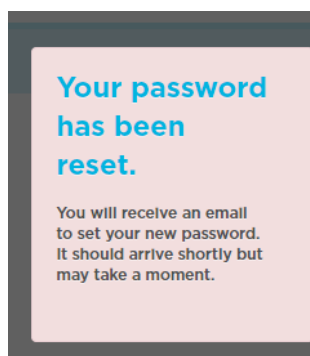
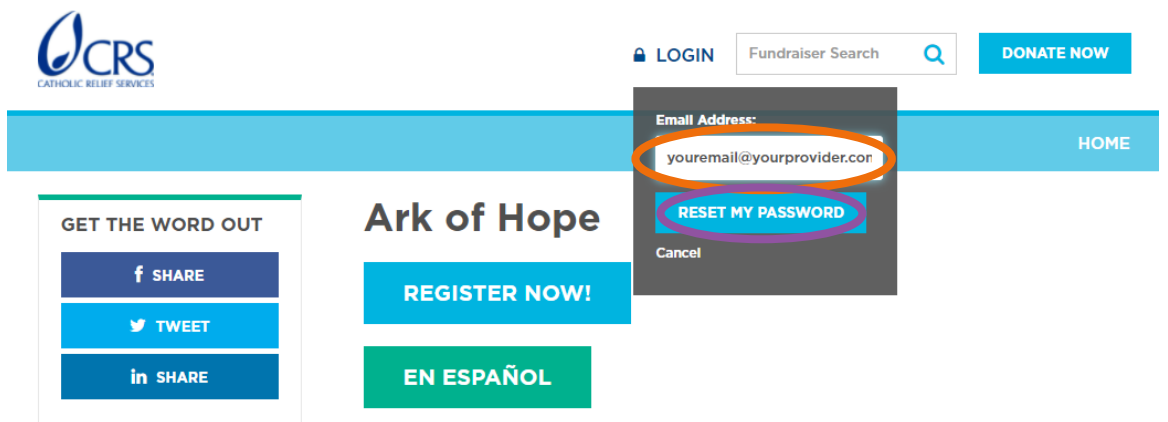
## How-to: Reset your Password

If you are registering for an event and have logged in to DonorDrive before you may find you need to reset your password. Resetting the password is easy and takes only a matter of seconds.

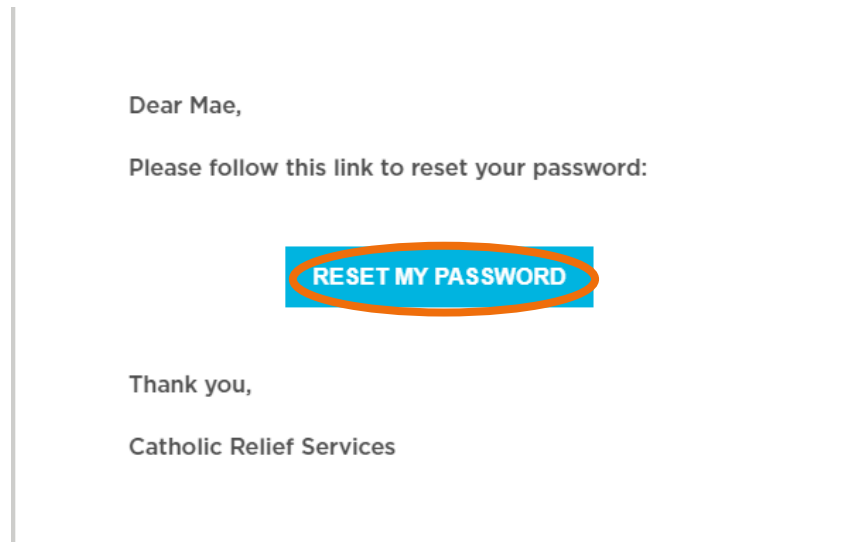
- 1 Go to the event page that you want to register for. In the upper white header select the **Login** button (orange) and then select **Forgot Password** (purple)



- 2 Enter in the email you used to join the previous event (orange) and then select **Reset My Password** (purple). A reset email will be sent to your email. If you receive a pop-up that the email can not be found, you can select the register now button and create an account with the desired email.



- 3 The reset email generally arrives within a few minutes. Select the Reset My Password button (orange) and then Select *Continue to Next Step* (green)



- 4 The link will open a new page to create your account password. Enter in the desired password and then confirm the password (orange). Make sure the two passwords entered match. Select Submit (purple).

## Please enter a password to create your account.

### User Details

Email Address \* youremail@yourprovider.com

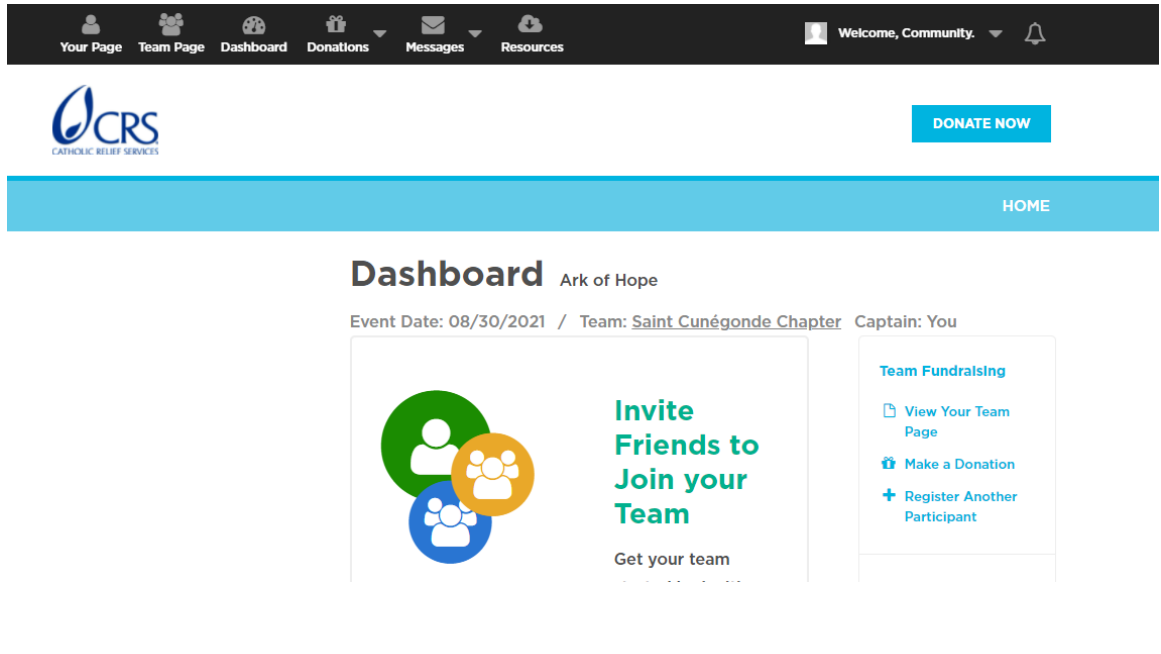
Password \*

Confirm Password \*

[Cancel](#)

The form contains three input fields: 'Email Address' (pre-filled), 'Password', and 'Confirm Password'. The 'Password' and 'Confirm Password' fields are highlighted with an orange oval. At the bottom, there is a 'Submit' button highlighted with a purple oval and a 'Cancel' link.

- 5 You will automatically be logged in to your page. You can go to your team page, see donations made, send messages, etc.



- 6 If you have previously participated in other events, you can select the event name beside the Dashboard (orange) and select which event you would like to view (purple). This will load your personal dashboard for that event.

