

NEWS & VIEWS

NEWSLETTER HIGHLIGHTS

- 2 THE GESU CENTURY:**
Campaign Updates
- 4 EUCHARISTIC LIVING:**
Extraordinary Ministers of Holy Communion
- 6 LIFELONG LEARNING:**
Rosemary Nemeth Spotlight
- 8 GENEROUS SERVING:**
Volunteer Highlights
- 10 AMDG: Enhancing Gesu's**
Education & Prayer Through New Outdoor Spaces



LETTER FROM THE PASTOR

As I gaze out my office window, so many thoughts come to mind and emotions fill my heart. At first glance, as you probably would agree, the scene is chaotic - construction vehicles, mounds of dirt, unfinished stone structures, disrupted landscaping, and numerous laborers hard at work. The projects seem endless; the mess at times is overwhelming. Upon further reflection, however, and looking more deeply at the activity before me, I am able to see beyond the dirt and machinery. I see the future of Gesu and the beginning of a beautiful transformation of a space built on the solid foundation of our parish established nearly 100 years ago. I am excited about what is to come and thrilled to be part of this special time for Gesu.

I find my heart filled with joy and humility as I think about all that Gesu is and all that it will continue to be. Based on our mission of *Eucharistic Living, Lifelong Learning and Generous Serving*, Gesu thrives because of its people, a people who find God in all things. This

summer, I have had the wonderful opportunity to spend time with so many of our parishioners. We've enjoyed countless hours of companionship and conversation amidst the beauty of God's creation. I am so grateful for all of these experiences and truly enjoy these special times. I love to hear the stories of people finding God in their everyday activities, sharing God with those around them, and growing in their love of God and all that He has given. Essentially, this is the mission of Gesu, one that I hope will continue to grow and prosper.

I invite you to delve into the following pages of our *News & Views* and to reflect on how you can live the Gesu Mission. Where do you find God in your life, and how can you bring Him to others?

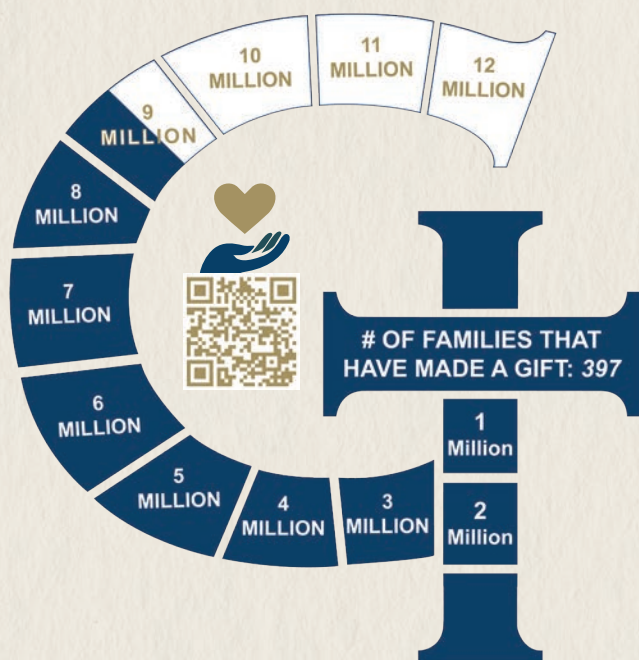
Fr. Lukas M. Laniauskas, SJ

THE GESU CENTURY

One Faith • One Family • One Future



On August 17, 2024, Gesu publicly launched *The Gesu Century Campaign – One Faith, One Family, One Future*. This capital and endowment campaign has a goal of raising \$12 million dollars by the end of 2026. This campaign is in celebration of Gesu's 100th anniversary and focusing on our future. We are pleased to say we have raised close to \$8.5 million dollars from Gesu parishioners, school families, and friends. This is an incredible success to date, yet we still would like to reach (or surpass) our goal of \$12 million.



HELP US REACH OUR GOAL BY 2026!

To learn more about *The Gesu Century Campaign* or to make a gift or a pledge, scan the QR Code, visit ChurchoftheGesu.org/Century, or contact Mary Kate Farrar at (216) 932-0617.

The initial phase of the campaign focused on several capital and infrastructure areas on our campus. All these projects have enhanced our beautiful property and modernized the campus too. The next phase is focused on raising funds and awareness for the Gesu Endowment. The endowment is critical to keeping our mission of *Eucharistic Living, Lifelong Learning, Generous Serving* at the heart of who we are as a parish. Money contributed to the endowment is, in essence, a gift that lasts forever. Gesu's general endowment was established in January 1983, and in initial documents it was written: "A gift given to the endowment is a way to share the light of that candle that burns brightly in all of us. It is light passed on to future generations of Gesu families who will know that we cared deeply about our parish and our community. The spirit and legacy of a gift to the Gesu Endowment Fund outlives the donor and funds the excellence that has become a hallmark of this parish."

CAMPAIGN NUMBERS

As of June 30, 2025

397



Families That Have Made a Gift

\$8,402,699

Total Gifts & Pledges



\$4,143,856



Unrestricted Gifts

\$894,474

Endowed Gifts



\$2,274,165



Outdoor Campus Gifts

\$1,090,204

Infrastructure & Preservation Gifts



11

Individuals or Families Who Have Notified Gesu That We Are in Their Estate Plans

TO ENSURE GESU'S MISSION CONTINUES FOR THE NEXT CENTURY,
The Gesu Century Capital and Endowment Campaign
 IS COMMITTED TO RAISING \$5 MILLION TO INCREASE THE ENDOWMENT.

Gesu's General Endowment consists of many named endowed funds, and these funds have a specific designation and purpose. Below are four designated endowed funds and a description of their important focus. Please consider supporting these funds or the general endowment.

Gesu Parish Booster Organization Endowment Fund was established by the late Robert L. Morrissey and his family in 2000. This fund is to be used for capital improvements or major athletic expenditures needed to sustain or enhance the Gesu Sports Program. Over the years, the fund has helped refurbish the gym floors, provide tinting film for the gym windows, purchase a batting cage, acquire a wireless microphone, and so much more.

The John and Mary Coyne Family Endowment in Memory of Cathleen Coyne Lane was established in 2006 in gratitude for the excellent education the Coyne children received at Gesu and to honor Cathleen's memory. This fund has helped teachers throughout the years have resources for their classrooms, cover registration fees for continuing education courses, provide funds for licensure renewal, and other important expenditures. The Coyne's were committed to grow-

ing this fund to help even more faculty members develop advanced, contemporary, and specialized teaching skills.

The Mary Carol Jones Scholarship Endowment was established in 2022 by her family in honor of her 50+ years of academic, spiritual, and professional support to Gesu students, faculty, and their families. Mary Carol's nephew, Chris Jones, and his family wanted to celebrate Mary Carol's selfless service and commitment to Gesu Catholic School. The fund provides four students with an annual scholarship to attend Gesu Catholic School.

The Anthony and Mary DeFino Scholarship Endowment was established in 2004. The DeFino Family has a long history with Gesu as Mr. and Mrs. DeFino's children attended Gesu Catholic School, as well as many grandchildren. Currently, a 4th generation DeFino is attending Gesu. Talk about a Gesu legacy! This fund was established for the purpose of retaining a talented teaching staff for the benefit of our students through programs of professional development and special projects to enhance the educational environment of our school. In addition, when the investment fund has the capacity to do so, it can be used to supplement the parish-wide responsibility for teacher's compensation.



YOUR IMPACT MATTERS

Gifts of all sizes are accepted to Gesu's Endowments and provide support for ten, twenty, fifty years, and beyond.

You may make a donation to the endowments with cash, credit card, stocks, or a planned gift.

For more details on the different gift options, scan the QR code, visit our website at ChurchoftheGesu.org, or contact Mary Kate Farrar at (216) 932-0617 or MKFarrar@ChurchoftheGesu.org.

Learn More



Thank you for investing
in our future!



Gesu Parish, a Catholic community in the Jesuit tradition, is committed to Eucharistic Living, Lifelong Learning, Generous Serving All for the greater glory of God

EUCCHARISTIC LIVING

Kylie Gillespie, Director of Faith Formation - Children & Families

Photographs, Gavin Hunter



How does it feel to bring Jesus to people through the Eucharist?

Jan: Jan Grover grew up in the years before Vatican II was instituted so she spent most of her childhood receiving the Eucharist on her tongue. When she held the Eucharist in her hands for the first time following Vatican II, she couldn't help but marvel, "Wow." She was deeply made aware of the fact that she was holding Jesus in her hands.

Jan serves as an Extraordinary Minister of Holy Communion at Gesu, and she brings Holy Communion to King David Center Senior Living Community.

"Everyone approaches the Eucharist differently," Jan explained. "Each time someone new comes forward to receive Holy Communion, I look them in the eyes and acknowledge it doesn't matter who I am or who they are. What matters is that Jesus wants to come to all of us."

With humility, Jan expressed she is blessed to be the "means" by which people can receive Jesus in the Eucharist. "It is not about me. It's a wonderful gift that Jesus is with us."

Jean: In their twenties, Jean Turcu and her husband Dan spent several years volunteering at Malachi House, an end of life care center for terminally ill individuals with limited financial resources. Jean and Dan recognized a need in the Malachi House community for someone to bring Holy Communion to those who were ill and unable to attend Mass, so they sought training to become Extraordinary Ministers of Holy Communion and stepped into the role.

Jean serves as an Extraordinary Minister of Holy Communion at Gesu and at a local retirement home. Twice a week Jean brings Holy Communion to the residents of the retirement home. "It's what they wait for," she says, "and it brings them such joy."

Receiving the Eucharist is receiving God's personal, intimate love. In the Eucharist, Jesus comes near to us under the appearance of bread and wine so we may touch Him, receive Him, and experience the fulfillment of His promise to be with us always.

The Gesu mission of Eucharistic Living is to center our lives in Christ and the celebration of the Eucharist. To live this mission, we commit to participating in the celebration of the Eucharist and proclaiming the Gospel to the world by sharing the love, joy, hope, and mercy of Christ.

Serving as an Extraordinary Minister of Holy Communion is one of many ways to share Jesus. Jan Grover and Jean Turcu, Extraordinary Ministers of Holy Communion at Gesu, took time to share what this ministry means to them and how they believe we can bring Jesus to our families, friends, and communities.

As you read, we invite you to consider and reflect on your own answers to the following questions.

Residents of the retirement home often express much gratitude for Jean bringing them Holy Communion. She accepts this gratitude, but recognizes it is she who is grateful! "It is an honor and privilege to bring Jesus to them," she says.

When we receive the Eucharist, we are called to "become what we receive." What does this mean to you?

Jan: "We become more and more of who He is as He is with us," Jan stated. When we receive Jesus in the Eucharist, we welcome Him into our hearts. We are then called to become like Him and to share Him with others.

Jean: Jean believes that the Eucharist makes us one with Jesus. She states, "Your heart is entwined with His. When we receive the Eucharist, we are filled with strength and peace that can only come from Him."

What does Gesu's mission of Eucharistic Living mean to you?"

Jan: Jan feels that *Eucharistic Living* extends beyond receiving the Eucharist at Mass. The word Eucharist means "thanksgiving," and according to Jan, thanksgiving and community are two crucial parts of *Eucharistic Living*.

When a community unites in prayer and gives thanks, they are participating in *Eucharist Living*. Just as we unite in community through reception of Holy Communion, we also unite in prayer and petition.

Jean: Jean believes the Gesu mission of *Eucharistic Living* means taking Jesus' presence in us out into the world and to be His heart and His hands. This idea reinforces her belief that when we receive the Eucharist, our hearts are truly entwined with His.

Anyone who receives Jesus in the Eucharist can bring Him to other people. We bring Jesus to others by living according to how He wants us to live - loving, sharing, serving, staying open to His movements, and following His peace.

According to Jean, "When we stay close to Him, He will give us our own unique mission."

How can people who are not Extraordinary Ministers of Holy Communion live out this mission in their everyday lives? How do you live out this mission beyond your ministry?

Jan: "Though the ministry of an Extraordinary Minister of Holy Communion makes the presence of Jesus easier to see," Jan explains, "we are called to see Jesus in everyone."

Jan suggests we can become more aware of Jesus' presence with us by reflecting on two important questions: Just what does it mean to me personally when I receive Jesus? What am I called to do, especially each week when I am sent from Mass to "Go in peace and to love and serve the Lord"?

Jean: Jean shares, "I recently heard a story of a Catholic priest who lived in the 1900's, had his hands cut off, and was imprisoned because of religious persecution."

Upon further research she found this quote from the priest. He said, "Never again can I lift up Christ in my hands, but I can lift Him up in my heart and so can you. You can take Christ everywhere, show him to everyone. Be his monstrance."



We, as Catholics, are all called to the mission of *Eucharistic Living*. We are called to bring Christ everywhere, to show Him to everyone, and to be His living monstrance. ***How will you live the unique mission Jesus has given you? How will you bring Him into the world?***

In every celebration of the Eucharist, there should be a sufficient number of ministers of Holy Communion so that it may be distributed in a reverent and orderly manner. Bishops, priests, and deacons distribute Holy Communion in virtue of their office as ordinary ministers of the Body and Blood of the Lord. When the size of the congregation or the incapacity of the bishop, priest, or deacon requires it, the celebrant may be assisted by other bishops, priests, or deacons. If such ordinary ministers of Holy Communion are not present, "the priest may call upon extraordinary ministers to assist him, i.e., duly instituted acolytes or even other faithful who have been deputed for this purpose. In case of necessity, the priest may also depute suitable faithful for this single occasion (GIRM 162)." 2010, United States Conference of Catholic Bishops

LIFELONG LEARNING

Colleen Clemens, Development Assistant



Rosemary with her 4th graders in room 112, whom she says taught her so much!

In the words of Norbetus Krisnu Prabowo, an ardent chemist and STEM educator from Indonesia, “The journey for knowledge is endless. We are forever students in the school of life, embracing the role of lifelong learning forever.” Rosemary Nemeth, one of Gesu’s beloved 4th grade teachers, has lived by this motto throughout her life, both personally and professionally. She prides herself on experiencing the world as her classroom and has always encouraged others to do the same. She believes strongly that lifelong learning is essential and involves continually asking questions, researching, and seeking to understand more. It means never giving up, even when the learning gets tough.

Rosemary has taken this motto of lifelong learning to heart in her everyday life. Her interests are extensive. In addition to serving as Beachwood’s Historical Society President

and an Artistic Swim Instructor, she enjoys traveling, gardening, and playing pickleball. She has even taken pilot lessons, and skydiving is on her bucket list! Rosemary’s strongest interests, however, involve history and science. She calls herself a Franklin Lloyd Wright “junkie” and smiles when she shares that there are actually two Franklin Lloyd Wright houses nearby in Willoughby. This summer Rosemary is engaged in the America250 Project whose mission is to celebrate and commemorate the 250th anniversary of the signing of the Declaration of Independence while inspiring Americans to reflect on the past, strengthen their love of country, and renew their commitment to the success of America’s future. As part of this project, Rosemary has been enjoying her time cataloging Revolutionary War soldiers who are found in Northeastern Ohio. Through her research she discovered two soldiers buried right here in the Beachwood Cemetery on Green Road.

Rosemary’s passion for science has taken her in many directions. Due to her love for ecology, she has traveled to the Redwood Forest and participated in a submarine dive. She is fascinated with archaeology and has participated in many archaeological digs, an interest that she has shared with her students as well. She also has heard multiple lectures by various archaeologists. Most recently, she had the opportunity to meet Dr. Zahi Hawass, “the real Indiana Jones,” when she attended a presentation by him in Cleveland as one of the stops on his World Tour. In addition, having always been fascinated by weather,



COMPANIONS ON A JOURNEY

The Church of the Gesu will soon begin a new journey to welcome those who wish to learn more about the Catholic faith with a view towards joining the Church. This process is now called the Order of Christian Initiation of Adults (formerly RCIA). OCIA welcomes adults and children, 7-17 years, who are interested in learning more about the Catholic faith and guides them toward the celebration of the Sacraments of Initiation—Baptism, Confirmation, and Eucharist.

ALL ARE WELCOME!

Wednesday, September 10 - 7:00-9:00 pm
Church of the Gesu Pastoral Center – Dietz Room

Contact Marcia Leous for more information or to register:
MLeous@ChurchoftheGesu.org or (216) 932-0617.



storms, and clouds, Rosemary recently participated in training and became an official weather watcher.

Rosemary acknowledges that her students taught her many things during her 43 years of teaching. As a Gesu alum herself and mother of a Gesu graduate, Rosemary believes that Gesu School provides a wonderful atmosphere for learning and growing. It encouraged her to adopt a mindset that involves being open to new ideas while being motivated by curiosity and the desire to be more knowledgeable. She truly hopes to have passed this mindset along to her students as well. Rosemary believes strongly that "To teach is to touch lives." Throughout her career, she has openly shared her own experiences and has encouraged



Gesu team members from last year's JCU Science Olympiad. For years, Rosemary has helped coordinate this competition, which draws students from around the Catholic Diocese of Cleveland.



As an Egyptologist, Rosemary loves the pyramids and pharaohs. She recently attended a lecture given by world famous archaeologist, Dr. Zahi Hawass.



Above: Working on identification of Revolutionary War Soldiers in the Beachwood Cemetery, as part of the America 250 Ohio American Revolutionary War Veterans Graves Project

students to learn more about what interests them. She has listened as students shared their own passions with her and inspired them to delve into those topics to learn more. She even provided them opportunities in her classroom to share what they have learned with the other students through show-and-tell opportunities and/or slideshow presentations. She especially loved watching them explore through hands-on science experiments, building with littleBits, designing commands for Ozobots, participating in Science Olympiads at Gesu and JCU which she started, and so much more.

Rosemary encourages all people to continue learning throughout their lifetimes. In the words of Henry Ford, "Anyone who keeps learning, stays young!" She hopes people will keep their eyes open and take advantage of opportunities to learn more. She would advise everyone to take a class, explore, and read about topics that are of interest. Rosemary says, most importantly, to enjoy life, seek out the wonders of God's creation, and be sure to share what you have learned with others.

BIBLE STUDY WITH FR. VINCENT

Are you Interested in a Scripture Study on the Book of the Old Testament Prophet Isaiah?

Fr. Vincent is sponsoring a group to discuss this important prophet **beginning on Wednesday, September 10, at 9:15 am, in McAuley Hall after the 8:30 am Mass.** The group will meet several Wednesday mornings per month, until 10:50 am, with a short break at 10:00 am. Since Isaiah is so long, it might take a second year from September to May to complete the program. A book will be sold at the first few sessions to serve as a guide to your study, reflection, and prayer. **All you need to bring is a Bible!**

REGISTER TODAY...



For a complete list of dates, and to register for this program, please e-mail Fr. Vincent at MVincentSJ@ChurchoftheGesu.org.



GENEROUS SERVING

Amy Zucca, Outreach Coordinator



Chris Abood helped to frame a garage as part of the Habitat for Humanity Faith Build on E. 143rd St. for Simon and his family who moved to Cleveland from the Democratic Republic of the Congo.

Gesu's St. Vincent DePaul Conference members work to cultivate the five Vincentian virtues of Simplicity, Humility, Gentleness, Selflessness, and Zeal in their mission to bring aid to Gesu's struggling neighbors. SVDP is there to lend a hand to our neighbors struggling to pay utility bills, temporary or emergency rent payments, and other necessary expenses. When someone has fallen behind on their payments due to illness, temporary loss of income, or other transitory circumstance, SVDP's bridge funding helps them to retain their apartment and keep the lights or heat on. The SVDP Gesu Conference sends a team of two members to visit our struggling neighbors in their home to see how they can assist them.

Gesu's Conference members, Rick Ambrose, Maureen Brennan, John Diemer, Bud Doyle, George Gortz, Pat Hawkins, Denise Hawkins, Ned Hyland, John Mulligan, Gary Murphy, and John Patton, are able

to help more people by learning to use ServWare to meet the growing needs in our community. ServWare is a web-based application designed specifically to support SVDP conferences with their Friend in Need assistance requests, communication, reporting, and member management.

You can support Gesu's SVDP Conference by depositing money in the Poor Box located in the Church on the left wall of the niche by the statue of the Sacred Heart or by sending a check to the Gesu SVDP through the Parish Office.



SVDP members Gary Murphy, Bud Doyle, Denise Kirincic, Pat Hawkins, Maureen Brennan, John Mulligan, Rick Ambrose, and George Gortz reviewing neighbor requests.



The 2025 Gesu Summer Honduras Immersion Trip was led by Chris Catanese and Eileen Pryatel. Trip participants returned to Nuevo Paraiso, an orphanage housing nearly 100 children, to help build a brick wall, paint the



chapel, and use funds raised to purchase food, shoes, stoves, pillows, home furnishings, and more. This was made possible by donations from Gesu

School's Hike for Hunger, the Cal's Pals Fundraiser, and many generous individual donors.

Kristin Warzocha, CEO of the Greater Cleveland Food Bank, gave a presentation to Gesu parishioners about ways Gesu can help during challenging times through volunteering, advocacy, and financial contributions.



Meagan Salata organized a collection for **Thea Bowman Center's TBC Summer**, an 8 week summer learning experience in Cleveland's Mt. Pleasant neighborhood for children in K - 8th grades. Gesu parishioners enthusiastically responded by donating several cart loads of sidewalk chalk, bubbles, playground balls, jump ropes, markers, crayons, bracelet kits, paints, board games, balloons, and hula hoops.



Amy Zucca, helping to load the donations for delivery.

Upcoming

Save the date for these upcoming events at Gesu!

August 23:

Outdoor Mass, Dedication of New Outdoor Chapel, Block Party

August 27: First Day of School

September 19: Topgolf Event

October 18: Bulldog Bolt

October 25-26: GSO Weekend

November 19:

Women's Guild Boutique

November 23: Donut Sunday

December 2: #WeGiveCatholic

December 6: Day of Service



AMDG

*Father Lukas M. Laniauskas, SJ and
Meghan Svatora, Director of Development*

The new signage at the front entrances of Gesu Church will read: "Church of the Gesu - Ad Majorem Dei Gloriam - All for the Greater Glory of God." This is the mission of the Jesuit community and, thus, our mission. It is who we are and what we are about. This special motto comes from St. Ignatius of Loyola, the founder of the Society of Jesus. As we prepare to undertake our century celebrations, we are called to return to our roots and see how our new plans are still part of Ignatius' original vision.

What does it mean to do all for the greater glory of God and to follow the vision of St. Ignatius? At Church of the Gesu, it means to lift up education and prayer. Those are the two avenues St. Ignatius understood at his core and

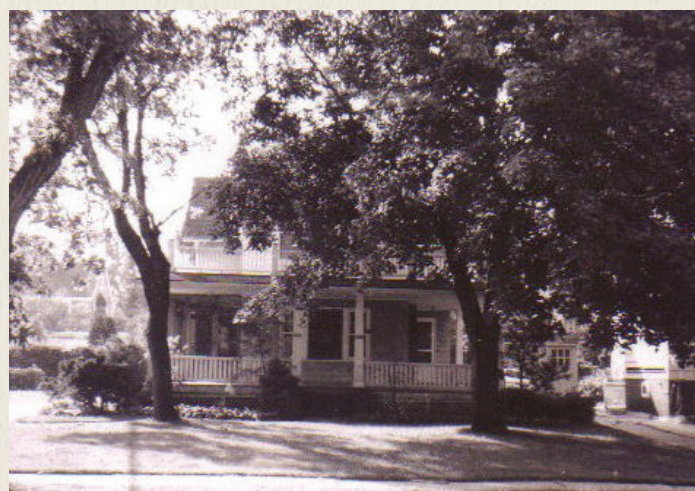
would become the mission of the Society of Jesus. From Gesu's founding in 1926, the people of this community prayed together and educated their children together. The first phase of work done on our front property is funded by The Gesu Century Capital and Endowment Campaign as a testament to our legacy. We are taking Ignatius' vision of worship and education and making it tangibly seen, felt, and experienced.

Pope Francis' encyclical, *Laudato Si, Care of our Common Home*, reminds us of the importance of cherishing the natural world. The most prominent component of the outdoor development is our new chapel. It is a place for our community to gather, pray, and worship in a natural setting. Included in this sacred space will be an ascending statue of Jesus of the Sacred Heart, the devotion entrusted to the Jesuits to spread around the world. Jesus is ascending to heaven with his arms outstretched, and we can imagine him saying to us, "Go forth and make disciples of all

Written by Mary Carol Jones

Meeting the needs of a growing parish and school has meant creating and refining our worship spaces over the past century. At the heart of each endeavor has been the Jesuit maxim, "All for the greater glory of God."

A rented duplex located at 3786 Silsby Road was the hub for the 53 families who became part of the first Gesu community. Children were taught by four Sisters of Notre Dame in two rooms of this house. The pastor, Father Francis Rudden, SJ, lived on the second floor. Masses and the first Gesu graduation and First Communion celebration were held at the University Heights City Hall in 1927. Breakfast followed in the Fire Station.



In November 1927 the parish moved to Miramar Boulevard, on the grounds of John Carroll University. St. Ignatius College had recently moved from Ohio City to develop a new university campus in the suburbs.

Two portable buildings which served as a school were donated by Cleveland Heights Public Schools. An adjoining building served as a chapel for Mass and other liturgical celebrations until 1940.

nations, baptizing them for the greater glory of God.” Jesus will be flanked by statues of Mary and Joseph. These statues are from a church that closed and are constructed of the same type and era of Italian marble as the statues in our own church. Repurposing these statues is both an opportunity to save these sacred pieces and also tie them beautifully into our existing spaces.

We are also blessed to have a relic of St. Ignatius of Loyola to place within the altar of this outdoor chapel. How appropriate, as we strive daily to live out Ignatius' vision. There will be a piece of him present with all who come to worship in that space, and he will be alongside us as we learn and pray together.

The second main component of our frontage development is an outdoor classroom in which the community can gather for educational purposes. It is a space for people to come together to learn, to deepen their knowledge of

God and His world. Everyone, from our school children to our Bible study groups to our vibrant organizations, is welcome to meet in this space.

The chapel that Ignatius' community received from the Vatican housed an image of Madonna della Strada, Our Lady of the Way, which became a central devotion of the Jesuits. Along Miramar Boulevard we will also have a beautiful statue of Our Lady of the Way to remind us of the founding of our church and our great devotion to Mary.

The development in front of our property is exciting! It returns us to our roots in a way that also responds to the needs of our current times. Ignatius, living in a different time with a different understanding of liturgy and learning, could never have imagined what we see on our campus today. Therefore, in fact, the old vision with new components will take Gesu and our community to the next level, moving us forward into the next 100 years.



The current Gesu School building was built in 1940 with eight classrooms plus living quarters for the priests on the second floor. The church was located at the rear of the school, in the space now known as the Bulldog Gym. Next to the building were the convent and rectory.



Gesu made history in 1958 with the creation of a beautiful new worship space. Filled with light, the new church soon became a distinctive landmark in the community. Highly acclaimed for its exquisite marble altar, the distinctive statuary, stained glass windows, and the magnificent crucifix above the altar, Church of the Gesu has been and continues to be “home” for many generations of parishioners. It serves as an unforgettable reminder of our mission to take Christ out to our world.



The continued commitment of Gesu parishioners to give glory to God led to the creation of the Marian Chapel in 2000. This peaceful space is used for daily Masses, evening rosaries, Eucharistic adoration, Taizé prayer services, and some funerals and weddings.



Nonprofit Org.
US Postage
PAID
Cleveland, OH
Permit No. 1132

Gesu Parish, a Catholic community
in the Jesuit tradition, is committed to
Eucharistic Living,
Lifelong Learning, Generous Serving
All for the greater glory of God

Join us for Gesu's Annual Parish **BLOCK PARTY**



SATURDAY, AUGUST 23 | 4:30 PM



FUN FOR
THE WHOLE
FAMILY!



Mass & Dedication

Join us in celebration for the first
Mass & Dedication in our new
outdoor worship space.



August 23 | 4:30 pm Vigil Mass

THE **GESU** CENTURY
One Faith • One Family • One Future