

The Solemnity of the Ascension of the Lord (transferred from Thursday, May 13)

May 16, 2021 **Mass 9:00am**

Prelude (Introit) *Men of Galilee, why gaze in wonder at the heavens? This Jesus Whom you saw ascending into heaven will return as you saw Him go, alleluia. Acts 1:11*

Processional Hymn 430 Hail the Day that Sees Him Rise

Confiteor (I confess, to Almighty God, and to you my brothers and sisters...) *spoken*

Kyrie (Lord, Have Mercy...) *spoken*

Gloria (Glory to God in the highest...) *spoken*

Reading 1 Acts of the Apostles 1:1-11

Responsorial Psalm *God mounts His throne to shouts of joy: a blare of trumpets for the Lord.*

Psalm 47

Reading 2 Ephesians 1:17-23 or *Ephesians 4:1-13*

Alleluia *Go and teach all nations, says the Lord; I am with you always, until the end of the world.*

St. Matthew 28:19a,20b

Gospel Reading St. Mark 16:15-20 *[He was received up into heaven, and sat down at the right hand of God.]*

Homily

Creed *I believe in one God...*

Prayers of the Faithful

Diocese of Duluth Vocations Prayer

Offertory *Men of Galilee, why do you stand looking in the sky? The Lord will return, just as you have seen Him ascend, alleluia. Acts 1:11*

Offertory Hymn 431 See the Conqueror Mounts in Triumph

Sanctus (Holy, Holy, Holy) *spoken*

Memorial Acclamation (...we proclaim Your death, O Lord...) *spoken*

Amen / Lord's Prayer

Agnus Dei (Lamb of God) *spoken*

Communion *These signs will accompany those who believe: they will cast out demons, and when they lay their hands upon the sick, these will recover, alleluia. St. Mark 16:17,18*

Post Communion Hymn 511 Godhead, Here in Hiding

Prayer after Communion

Final Blessing

St. Michael Prayer

Recessional Hymn 480 To Jesus Christ, Our Sovereign King

Easter Marian Antiphon 546 Regina Caeli / Queen of Heaven

THE ASCENSION OF THE LORD

INTROIT

Viri Galilæi

Acts 1: 11

VII

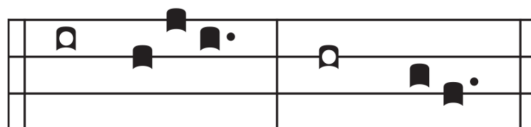
M

EN of Gal-i-lee, * why are you gazing in aston-

ishment at the sky? al-le-lu-ia; just as you have seen

him ascend in-to heaven, so, in like manner, shall he

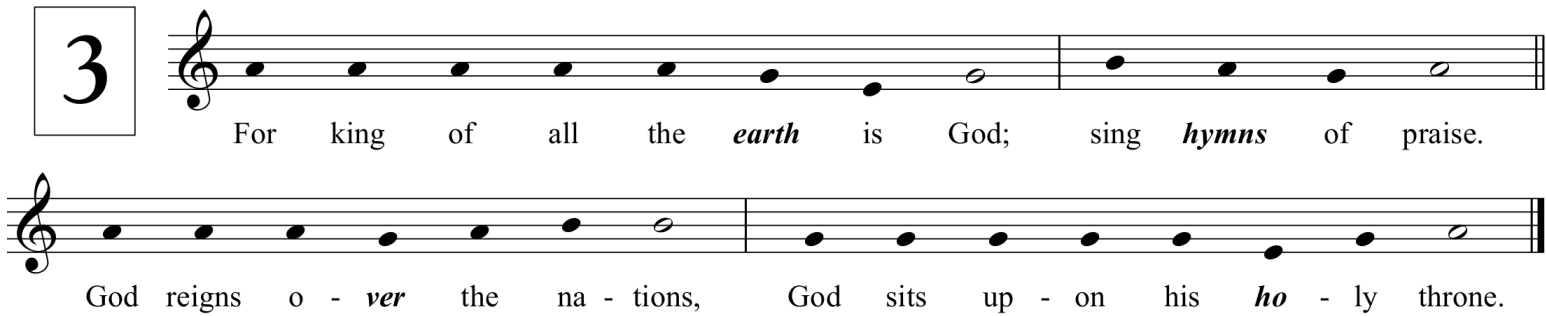
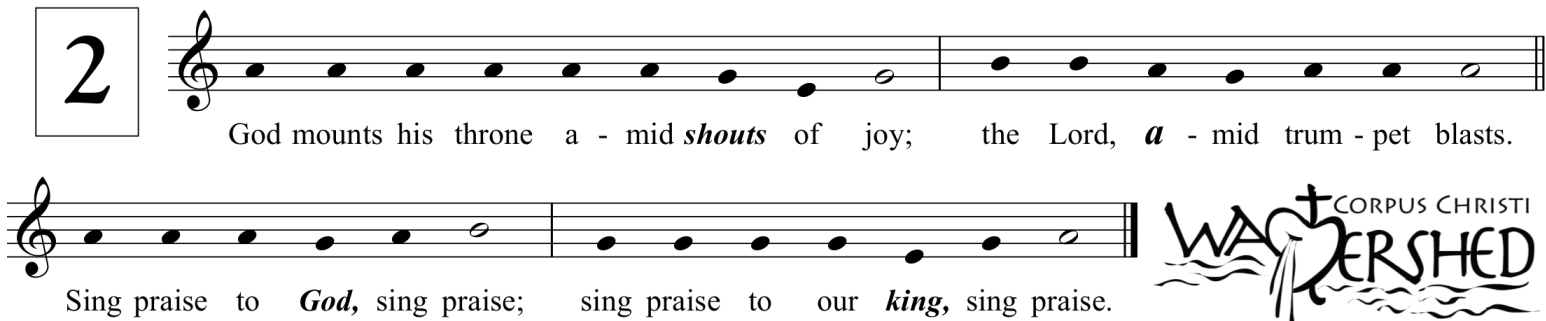
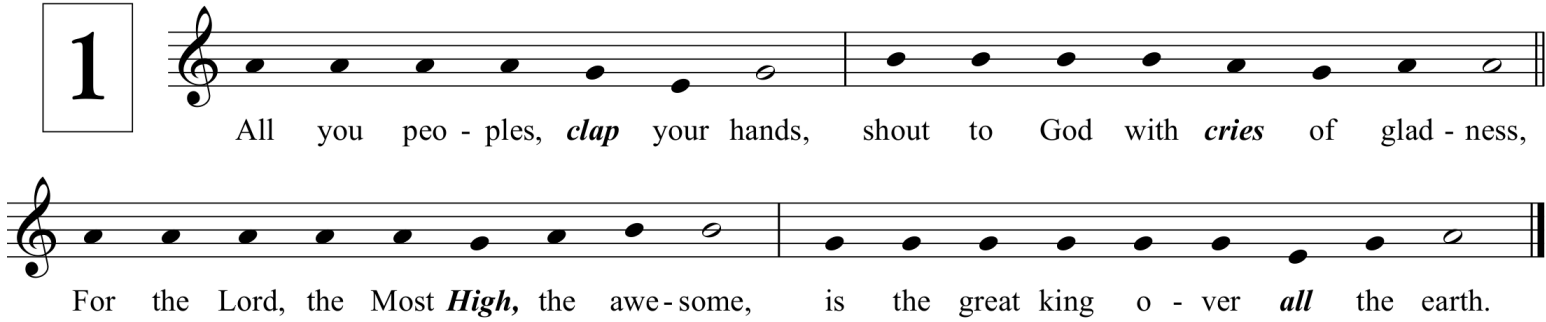
return, al-le-lu-ia, al-le-lu-ia, al-le-lu-ia.



1. Glory be to the Father and to the **Son**,
and to the Ho-ly **Spirit**,
as it was in the beginning is now and ev-er **shall** be,
world without end. Amen.



ALLELUIA can also be used as the REFRAIN

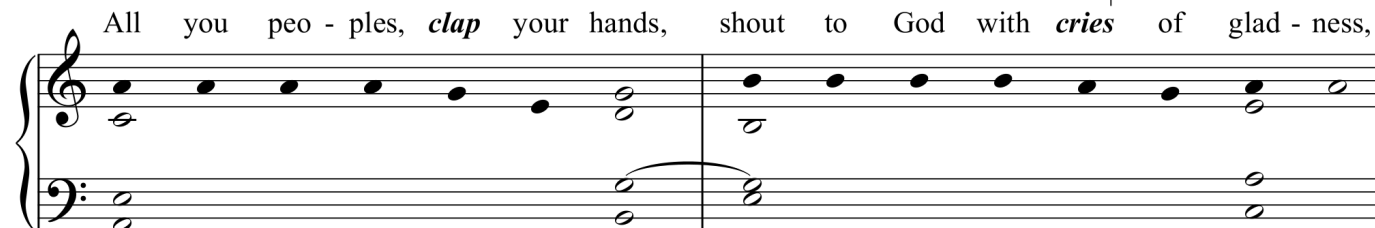


Ps. 47:2-3, 6-7, 8-9 • Jeff Ostrowski • ccwatershed.org

A



1



For the Lord, the Most **High**, the awe-some, is the great king o - ver **all** the earth.

2




Sing praise to **Gou**, sing praise, sing praise to our **king**, sing praise.



Psalm Verse no. 3

For king of all the *earth* is God; sing *hymns* of praise. God reigns o - *ver* the na - tions,

God sits up - on his *no* - ly throne.



Alleluia Ascension Sunday Year B

Al - le - lu - ia, Al - le - lu - ia, Al - le - lu - ia.

This system contains the first line of the Alleluia. It features a vocal melody in the treble clef and piano accompaniment in the grand staff (treble and bass clefs). The key signature has four flats (B-flat, E-flat, A-flat, D-flat) and the time signature is 3/4. The lyrics are 'Al - le - lu - ia, Al - le - lu - ia, Al - le - lu - ia.' The piano accompaniment consists of chords in the right hand and single notes or dyads in the left hand.

Go and teach all na - tions says *the* Lord;

This system contains the second line of the Alleluia. The vocal melody continues in the treble clef. The piano accompaniment features a long, sustained chord in the right hand and a moving line in the left hand. The lyrics are 'Go and teach all na - tions says *the* Lord;'. The word 'the' is italicized in the original score.

I am with you al - ways un - til the end *of* the world.

This system contains the third line of the Alleluia. The vocal melody continues in the treble clef. The piano accompaniment features a long, sustained chord in the right hand and a moving line in the left hand. The lyrics are 'I am with you al - ways un - til the end *of* the world.'. The word 'of' is italicized in the original score.

Al - le - lu - ia, Al - le - lu - ia, Al - le - lu - ia.

This system contains the final line of the Alleluia. It features a vocal melody in the treble clef and piano accompaniment in the grand staff. The key signature has four flats (B-flat, E-flat, A-flat, D-flat) and the time signature is 3/4. The lyrics are 'Al - le - lu - ia, Al - le - lu - ia, Al - le - lu - ia.' The piano accompaniment consists of chords in the right hand and single notes or dyads in the left hand.

Offertory

Solemnity of the Ascension of the Lord

Acts 1:11

Men of Gal - i - lee, why do you stand look - ing in the sky?

The Lord will re - turn, just as you have seen Him as - cend, al - le - lu - ia.

Glo - ry be to the Fa - ther and to the Son, and to the Ho - ly Spir - it,

as it was in the be - ginning is now and ev - er shall be, world without end. A - men.

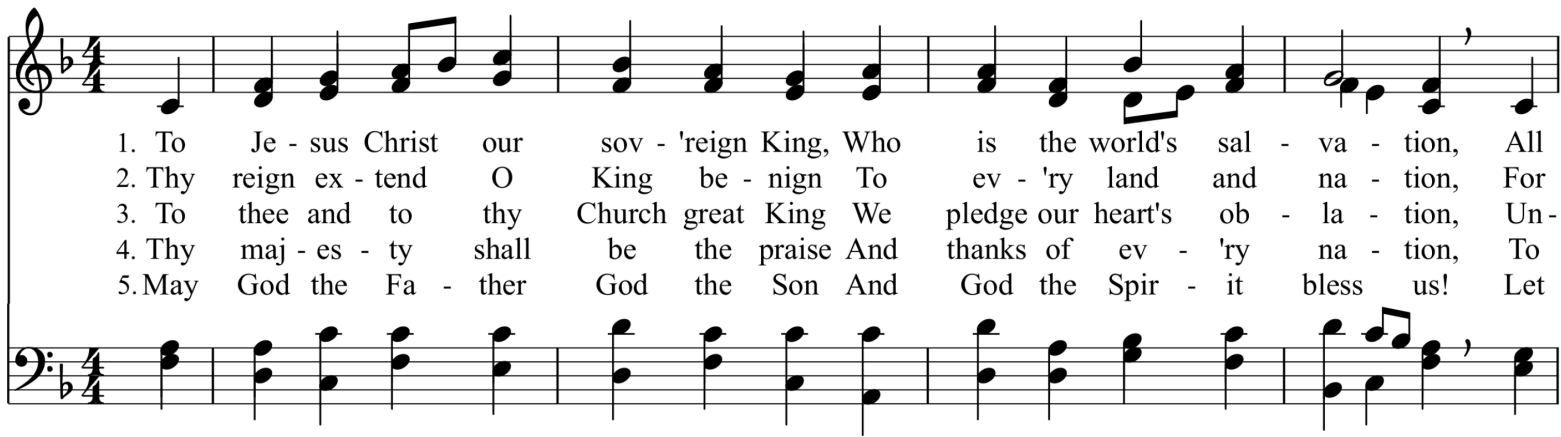
VII

T

[illegible]

1. Glory be to the Father and *to the* Son
and to the Ho-*ly* Spirit.
As it was in the beginning is now and *ev-er* shall be,
world without *end*, Amen.

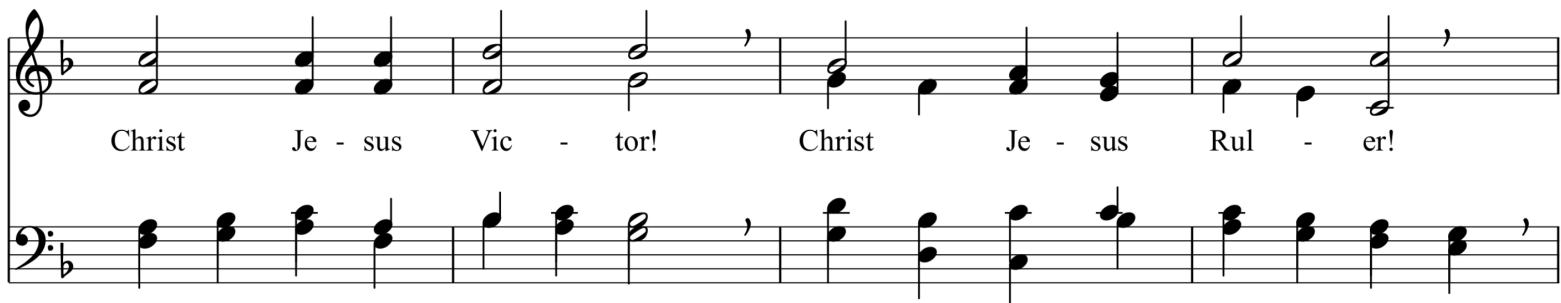
#480 To Jesus Christ Our Sovereign King



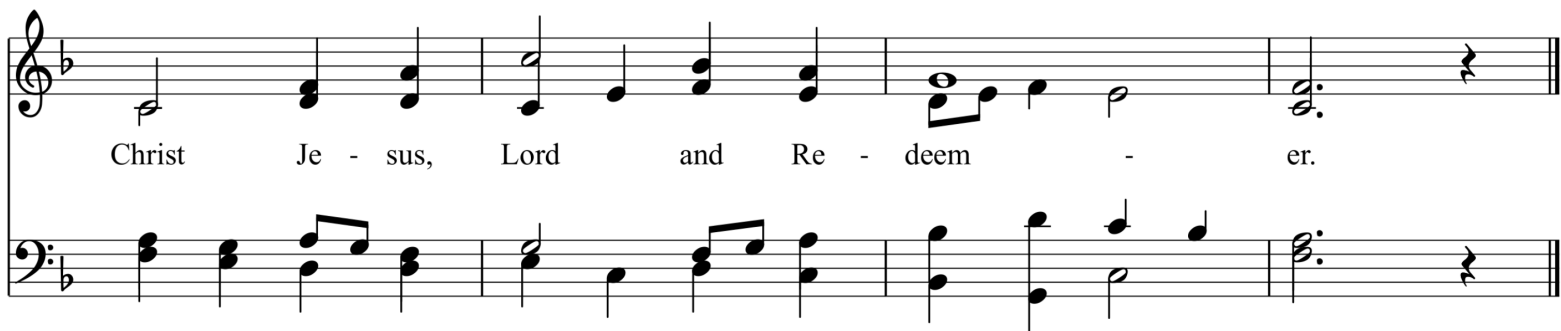
1. To Je - sus Christ our sov - 'reign King, Who is the world's sal - va - tion, All
2. Thy reign ex - tend O King be - nign To ev - 'ry land and na - tion, For
3. To thee and to thy Church great King We pledge our heart's ob - la - tion, Un -
4. Thy maj - es - ty shall be the praise And thanks of ev - 'ry na - tion, To
5. May God the Fa - ther God the Son And God the Spir - it bless us! Let



praise and hom - age do we bring And thanks and ad - o - ra - tion.
in thy king - dom Lord di - vine A - lone we find sal - va - tion.
til be - fore thy throne we sing In end - less ju - bi - la - tion.
thee the world with joy shall raise The voice of ex - ul - ta - tion.
all the world praise Him a - lone Let sol - emn awe pos - sess us.



Christ Je - sus Vic - tor! Christ Je - sus Rul - er!



Christ Je - sus, Lord and Re - deem - er.

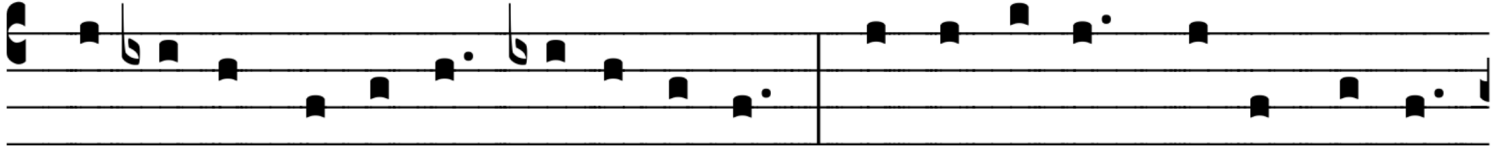
REGINA CÆLI, Votive Antiphon Easter–Pentecost Sunday

VI

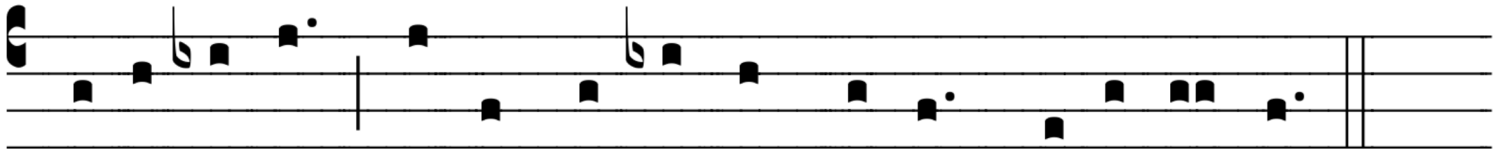


R

E-gína cæ-li * lætá-re, alle-lú-ia: Qui- a quem me-



ru- ísti portá-re, alle-lú-ia: Re-surré-xit, sic-ut di-xit,



alle- lú-ia: O-ra pro no-bis De- um, alle-lú- ia.

Queen of heaven, rejoice; for he whom thou wast made worthy to bear; has risen as he said; pray for us to God.