

ST. ANNE CATHOLIC CHURCH

BEYOND *Sunday*

BUILDING OUR FAITH, FAMILY AND FUTURE

PARISH LIFE CENTER



The very beginning of St. Anne's history lies not in Broken Arrow, but in Kiefer, Oklahoma. A small wooden frame church was built in that oil boom town. One of the altar boys who served in it was Victor Reed, who later became the bishop of the diocese. But the oil wells soon went dry, and the little white church was left almost deserted. So, in 1932, Bishop Kelley had it moved to Jenks, at 101st Street and Yale Avenue. The plan to develop a parish at Jenks never materialized either, and the little white church was picked up and moved again, this time in 1936, to Broken Arrow. The parish in 1936 consisted of 15 parishioners.



St. Anne was a mission of Holy Family in Tulsa and maintained that status until 1948. Then it was entrusted to the Capuchin Order, in the person of Fr. Alexius Lechanski. From the beginning, the Capuchins outlined a master plan for the future development of the parish. First on the agenda was the constitution of a school, to safeguard and promote the faith in this state of the Bible belt where Catholics are outnumbered twenty to one.

With the furnishings and equipment paid for by the Capuchins, the total cost of the school came to about \$60,000. The doors opened in September 1954, with 28 pupils, 11 of whom were non-Catholics. School was taught by two Felician Sisters.

The parish was split in 1980, and the Church of St. Benedict was formed. It was decided at that time that St. Anne's school would be sponsored by both St. Benedict and St. Anne parishes; therefore, the name was changed to All Saints School.

In 1987, in honor of the parish's fiftieth anniversary, Fr. Norbert Karava, pastor from 1986-1995, had a bell tower constructed where the old church once stood. The bells themselves were cast in Mexico.

The parish said goodbye to the Capuchins in 1996 and the bishop began to assign pastors. Several devoted priests have served the parish since then.

Our current pastor, Fr. Matt Gerlach, came to us a little over a year ago at the beginning of July in 2018. After settling in, getting to know his parishioners, and taking stock of the incredible community that has been built, he knew it was time to continue the great work.

Our History

He now calls us to look **beyond Sunday** as we strive to build our faith, family, & future together!



Father's Message

When I found out last year that I was assigned as Pastor of St. Anne, the first person I called was Fr. Kastl. In that initial conversation, we talked about the incredible energy of this place and the growth that had taken place. To be honest, what was going on at St. Anne in Broken Arrow was already reaching the ears of pastors and parishes throughout the diocese. Today, we find ourselves in the awesome position of growing our facilities to keep up with the number of folks that have joined us in worship and fellowship.



The 2017 Priority Plan for St. Anne Catholic Church was a bold proclamation of how the Catholic faith and stewardship is to be lived in our community. As you may know, the findings of the survey completed by parishioners indicated three priorities of focus: Engagement, Facilities and Outreach. Our capital campaign theme, *Beyond Sunday: Building our Faith, Family and Future*, which was created and developed by our parish clergy, seeks to take our facilities goal to the next step by providing a Parish Life Center to enhance what our parish offers to our families and community. This addition will allow us all to take our faith and fellowship beyond Sunday as the Lord continues to develop a vibrant parish community that invites the lonely and destitute to experience His love and peace any day of the week.

After the planning study conducted earlier this year, I am confident that our parish community can raise the funds to build the second phase of the master plan devised in 2014, a two-story structure that will house a choir and bridal room, a larger nursery, a dedicated Atrium for Catechesis of the Good Shepherd, multipurpose rooms for meetings and ministries, a shell space for future youth expansion, as well as plenty of additional parking.

Take a look through this Case Statement and enjoy what you see: people happy to be at church, plans to accommodate more babies and children, and an invitation for you to be involved in the amazing growth that's taking place. And if you don't mind taking a minute, say the Campaign Prayer, because as we know, "if the Lord does not build the house, in vain do its builders labor." It is only by the grace of God and the guidance of the Holy Spirit that we set out to accomplish this great work.

FR. MATT GERLACH
PASTOR



THE NEED IS REAL!

The need is real! Our parish has been blessed by our Lord with a surge of new families and parishioners becoming more and more involved in our ministries over the past few years. Such blessings have created certain challenges for our facilities and leaders, challenges that we are happy to address!

For example, during a recent event held at St. Anne, and prior to splitting up the older kids from the younger ones, there were 30 children in the current nursery, a room that measures 416 square feet! Overflowing with young hearts and minds is a great problem to have, but still a problem. A new nursery, with nearly 650 square feet of space and greater, will alleviate those concerns. And, as the project continues into Phase 3 of the master plan started by Fr. Kastl, that number could double to nearly 1,300 square feet of dedicated childcare space for our young people.

Once the new nursery is built, we will be able to use the old one for additional parish office space, another great need. Currently, four people share two small offices, one without an external window. Furthermore, two staff members have been forced to turn storage closets into offices!

The Atrium, a dedicated “classroom” for the nationally known Catechesis of the Good Shepherd program, will raise the level of Sacramental Preparation for our young people, too.

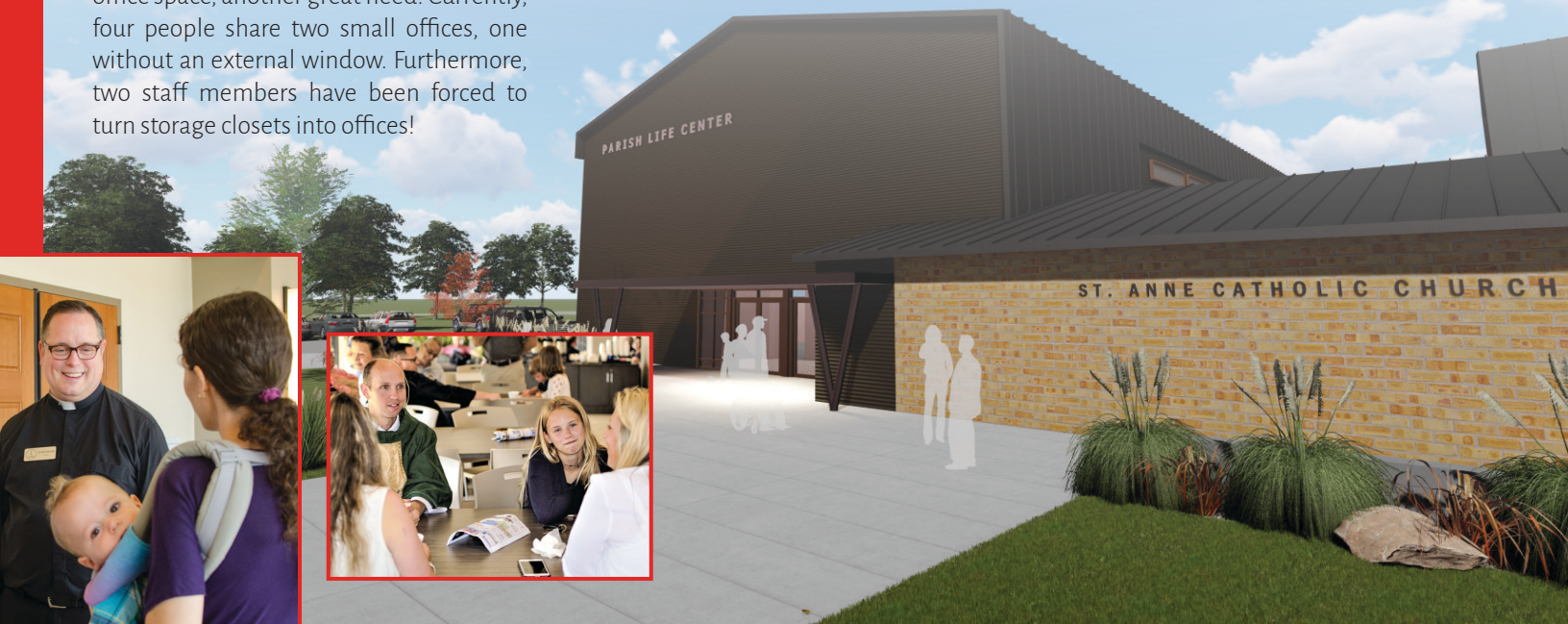
Several multipurpose rooms will be accessible by various parishioners and ministries that require meeting space. Currently, we are juggling groups between the Parish Hall, St. Francis Hall and St. Anne Hall. Having several more rooms will allow more groups to be on our campus at the same time, which assists with Christian fellowship and formation.

The second floor of the new building will provide much-needed, albeit rough and rugged, space for our youth to gather together. While it will only be shelled-in during Phase 2, it can be used for various youth events and, like the recent construction inside our Ministry of Compassion building, it is likely that some of our own parishioners can do some finishing work.



Finally, to continue singing the praises of the Lord, our beautiful choir will have a much-deserved new space to practice and store their music and robes. This room will double as a space for brides to dress and prepare for their wedding ceremony.

Right now, several of these needs are met by Dabrowski Hall, but anyone who's stepped foot in that old building knows that it has not been well cared for and must be torn down. It has, indeed, served its purpose for generations, but now is the time for it to become more parking, a little over 40 spots to be exact. Rest assured that many of the features of the old chapel inside it are being preserved and will be reused in our new daily Mass and adoration chapel, the central feature of Phase 3.



Campaign Goal

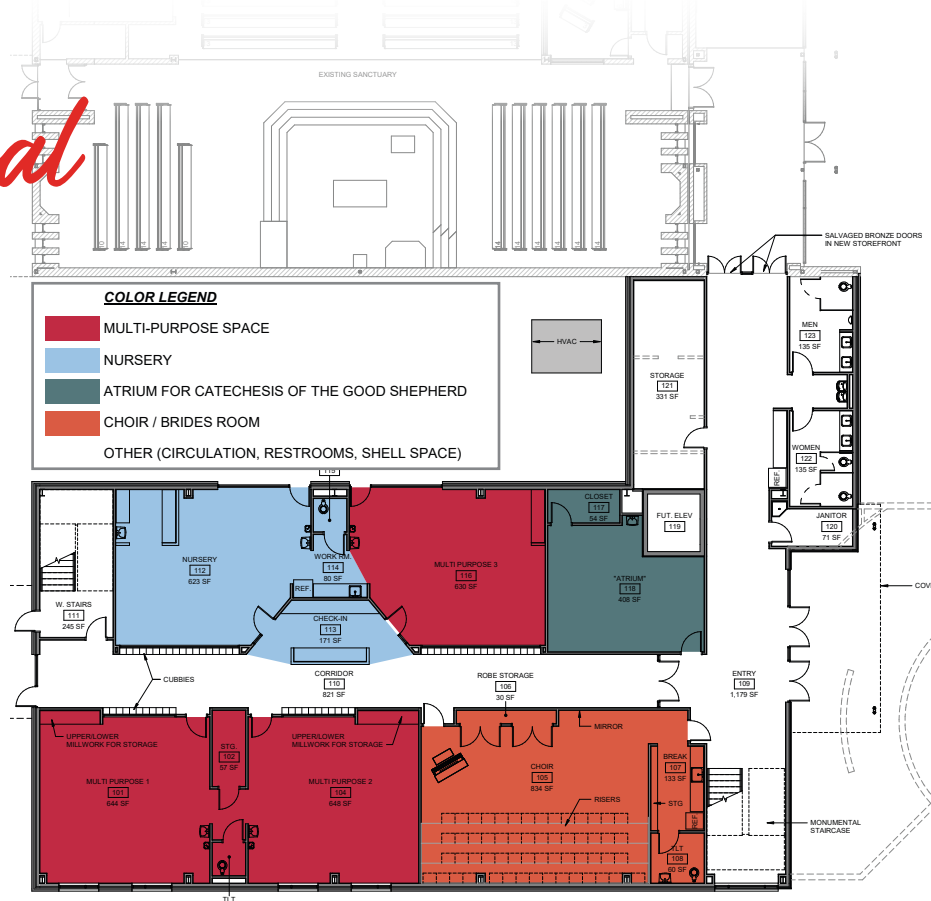
COST OF PHASE TWO: \$3.6 MILLION

THE MASTER PLAN for our campus development was organized by Fr. Kastl and parish leadership in 2014.

PHASE 1 was the addition of the Narthex and St. Anne Hall in 2015 and 2016 that are now attached to the church.

PHASE 2 is now underway and includes demolition of Dabrowski Hall and the building of the Parish Life Center. Phase 2 will include a nursery, a choir/bridal room, three multi-purpose rooms for ministry gatherings, an improved Atrium for Catechesis of the Good Shepherd, and a 2nd floor that will be unfinished but available to our youth until the next phase.

PHASE 3 is the final phase that will take place in the near future and will complete the Parish Life Center. It will include a new daily Mass and Adoration Chapel to seat about 100, a new sacristy, a conversion of our current chapel into additional church seating, and an additional confessional. The 2nd floor will also be finished and will be dedicated to serving our children and youth ministries primarily. It will include a large gathering area and four additional classrooms.



WHAT ABOUT OUR DEBT?

In February 2017, after the completion of Phase One, our parish borrowed \$1.7 million, which included paying off the pre-existing debt that totaled \$394,000. The remainder was needed to cover the difference between the \$3.08 million spent during Phase One, the amount of actual cash donations received for the project, and the parish cash flows forecasted for the term of the five-year loan. The loan was structured through a diocesan financing agreement requiring a \$12,703 monthly payment, which would have resulted in us owing a little less than \$1.3 million when the note was due in February 2022. At the time we entered into the loan, our regular monthly collections were not sufficient to support the monthly loan payment but if growth continued at the rate it had shown over

the previous few years, we would be able to support the monthly payment around 2020. Thanks be to God, the growth trend has generally continued and with the additional contributions to the building fund and the growth in regular collections, we have made additional payments on the loan totaling \$205,000 to date. Based on current projections, we expect to make additional payments before the loan is due that could total an additional \$200,000 to \$400,000 resulting in a balance due at the end of its term of between \$300,000 to \$500,000. In summary, parish finances are being handled with the utmost care and the Finance Council approves of Phase Two!

- Mike Clark, Chair of the St. Anne Finance Council



ALL SAINTS CATHOLIC SCHOOL UPDATE

Some school families have asked, "What happened to the capital campaign to build a new school?" The answer isn't simple, but it is positive!

The primary insight that was revealed at the conclusion of the school's planning study was a bit surprising. Although there is plenty of excitement and dedication among the families and faculty of the school, it was uncovered that many are unaware of the unique position that All Saints is in being a regional school. In other words, there are a handful of parishes that do not have their own parochial school, like St. Anne, that send many students to All Saints.

This is important because the study showed that the All Saints and St. Anne families simply cannot raise the necessary funds to move forward. We will need the blessing and support of the pastors and families of multiple communities to be ready to execute on a successful campaign.

It will be a process of educating others on what makes All Saints unique as a regional school and why supporting Catholic education is a responsibility of all the faithful in our diocese. As good stewards, school leadership values the planning study recommendations and is committed to the methodical approach and implementation. In that sense, we have already begun.



**PLEASE
WATCH FOR
FUTURE
UPDATES.**



Methods of Giving

A pledge is a non-binding commitment made in good faith. To make it easier for donors to complete a pledge, we encourage commitments fulfilled over the 3-year pledge period. A donor may satisfy his/her commitment through monthly, quarterly, semiannual or annual installments. Most donors use the options listed to fulfill a pledge.

CASH

Most donors use cash or check to fulfill their commitment since it allows St. Anne to address its immediate needs. This includes credit, debit and automatic withdrawal from savings or checking accounts. Parishioners can utilize the online giving application via our parish website to sign up for online giving and customize their own campaign pledge and recurring giving.

SECURITIES

Appreciated charitable gifts of stocks, bonds or mutual funds offer special tax advantages and can be a great way to provide a significant gift to St. Anne. Many parishioners utilize their annual required distribution as (part of) their annual gift to the campaign.

REAL ESTATE

Gifts of property entitle a donor to an income tax deduction equal to the full market value with no tax on capital gains.

LIFE INSURANCE

You may donate an old policy – or donate a new policy – by simply naming St. Anne Catholic Church as the owner and beneficiary.

PLANNED GIFT

This is the process of carefully selecting the best method and assets for making a charitable gift. A planned gift can enable a donor take full advantage of the tax laws to accomplish their financial and charitable goals. A bequest contained in a will is the most common form of planned giving.

FULFILLING YOUR OBLIGATION

This chart serves as a guide as you prayerfully consider your level of support.

CORPORATE MATCHING GIFTS

A matching gift program provided through an employer or board membership may allow a donor to increase the size of their donation. Many companies match charitable gifts of employees, retirees or board members. Note: Please do not interpret this information as legal advice. Instead consult your own qualified professional adviser for specific recommendations.



Total 3-Year

Pledge	Annual	Quarterly	Monthly	Weekly
\$21,000	\$7,000	\$1,750	\$583	\$135
\$15,000	\$5,000	\$1,250	\$417	\$96
\$12,000	\$4,000	\$1,000	\$333	\$77
\$9,000	\$3,000	\$750	\$250	\$58
\$6,000	\$2,000	\$500	\$167	\$38
\$3,600	\$1,200	\$300	\$100	\$23
\$2,400	\$800	\$200	\$67	\$15
\$1,800	\$600	\$150	\$50	\$12

CAMPAIGN PRAYER

Mindful always that 'if the Lord does not build the house, in vain do its builders labor,' the St. Anne Catholic Church community seeks to follow the promptings of the Holy Spirit as we take our faith *Beyond Sunday* and celebrate all that it means to be faithful Catholics.

Be with us, Lord, as we continue the good work you have begun in us by caring for our young, singing your praises, and opening hearts and minds to you as our Way, our Truth, and our Life.

Entrusting our efforts to your Divine Will, and praying for its success, we ask your blessing as we build our faith, family, and future!
Through Christ our Lord. Amen.

St. Anne, pray for us!



GENERAL CHAIRS

Mike and Tama Clark
Dave and Katie Cook
Drew and Allie Fenton
Jeff and Mary Guernsey
Andrew and Megan Polly
Scott and Colleen Weeks
Al and Susan Yowell

HONORARY CHAIRS

James and Judy Lalicker
Betty Taylor

PARISH LEADERSHIP

Fr. Matt Gerlach, *Pastor*
Fr. Sean O'Brien, *Associate Pastor*
Drew Fenton, *Parish Coordinator*
Mary Keaney, *Finance Coordinator*
Laura Jones, *Administration*

CAMPAIGN COUNSEL

The Holy Spirit
Steier Group