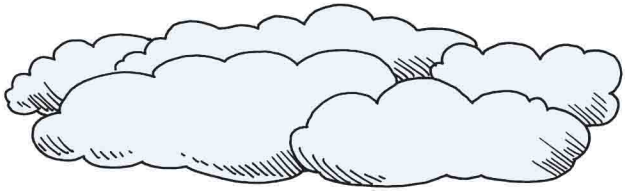
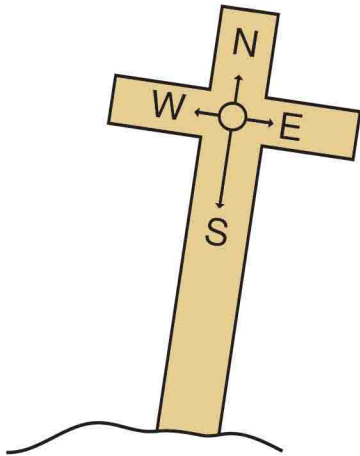


Only 1 thing enables us to come into God's presence with confidence.

Starting at the arrow and following the compass direction, place the letters on the lines to find the answer.



↓	T	H	S	U
	B	E	J	F
	L	O	O	D



— E — S —    — W — S — E — E — E —

— W — NE —    — W — W — NE — E — W —

Ages 7+

November 18, 2018 • Hebrews 10:11-14, 19-25

# Jesus Gives Us Confidence



How can we draw near to God?



Supply 2 letters to make a word that fits the definition. Put the resulting vertical words into the blanks to complete the verse.

calm		E	A	C	E		U	L
igloo builders		S	K	I	M		E	S
speaking		H	E	T	O		I	C
eternity		O	R	E	V		R	
wearing away		R	O	S	I		E	
fortresses		A	S	T	L		S	
moods		E	M	P	E		S	

By one sacrifice He has made \_\_\_\_\_  
 \_\_\_\_\_ those who are being made holy.

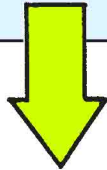


**Holy Family Parish**  
 201 Clark Street  
 Middletown OH 45042  
[www.holyfamilymiddletown.com](http://www.holyfamilymiddletown.com)

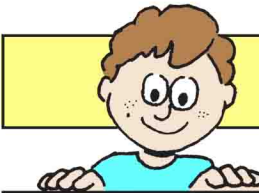
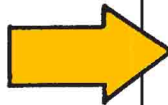
Because we are confident before God,  
we have some responsibilities.

Find and circle the list of words in the word search below.

another	full	how	profess
assurance	God	love	sincere
consider	good	meeting	spur
deeds	heart	near	together
draw	hold	not	toward
encourage	hope	one	unswervingly
faith			



	1	2	3	4	5	6	7	8	9	10	11	12
1	Y	L	G	N	I	V	R	E	W	S	N	U
2	S	D	W	E	E	N	A	C	N	E	P	D
3	S	O	R	R	G	N	O	N	E	P	R	O
4	H	I	U	A	O	A	S	A	A	O	O	G
5	A	P	N	T	W	S	R	R	R	H	F	T
6	S	D	H	C	D	O	E	U	G	O	E	R
7	N	E	R	E	E	D	T	S	O	P	S	A
8	R	O	E	A	I	R	C	S	O	C	S	E
9	L	D	T	S	W	H	E	A	D	K	N	H
10	X	L	N	T	O	G	E	T	H	E	R	E
11	K	O	U	L	G	N	I	T	E	E	M	K
12	C	P	D	F	A	I	T	H	L	O	V	E



Use the words circled in the word search to complete these "Let us ..." instructions.

Let us DRAW  $\frac{2}{6} - \frac{5}{9}$  to  $\frac{9}{2} - \frac{9}{5}$  with a  $\frac{12}{4} - \frac{12}{2}$   
 $\frac{1}{3} - \frac{7}{9}$  in  $\frac{12}{9} - \frac{12}{5}$   $\frac{4}{12} - \frac{1}{9}$   
 $\frac{8}{9} - \frac{8}{1}$  of  $\frac{4}{12} - \frac{8}{12}$ .

Let us  $\frac{6}{9} - \frac{3}{12}$   $\frac{12}{1} - \frac{1}{1}$  to the  
 $\frac{10}{5} - \frac{10}{2}$  we  $\frac{11}{2} - \frac{11}{8}$ .

Let us  $\frac{1}{12} - \frac{8}{5}$   $\frac{1}{4} - \frac{3}{2}$  we may  $\frac{1}{6} - \frac{4}{3}$   
 $\frac{7}{3} - \frac{9}{3}$   $\frac{7}{2} - \frac{1}{8}$  on  $\frac{7}{7} - \frac{2}{2}$   
 $\frac{9}{12} - \frac{12}{12}$  and  $\frac{9}{6} - \frac{9}{9}$   $\frac{2}{9} - \frac{6}{5}$ .

Let us  $\frac{1}{7} - \frac{3}{9}$  give up  $\frac{11}{11} - \frac{5}{11}$   
 $\frac{4}{10} - \frac{11}{10}$ .

Let us  $\frac{12}{10} - \frac{4}{2}$   $\frac{7}{3} - \frac{9}{3}$   $\frac{7}{2} - \frac{1}{8}$ .