

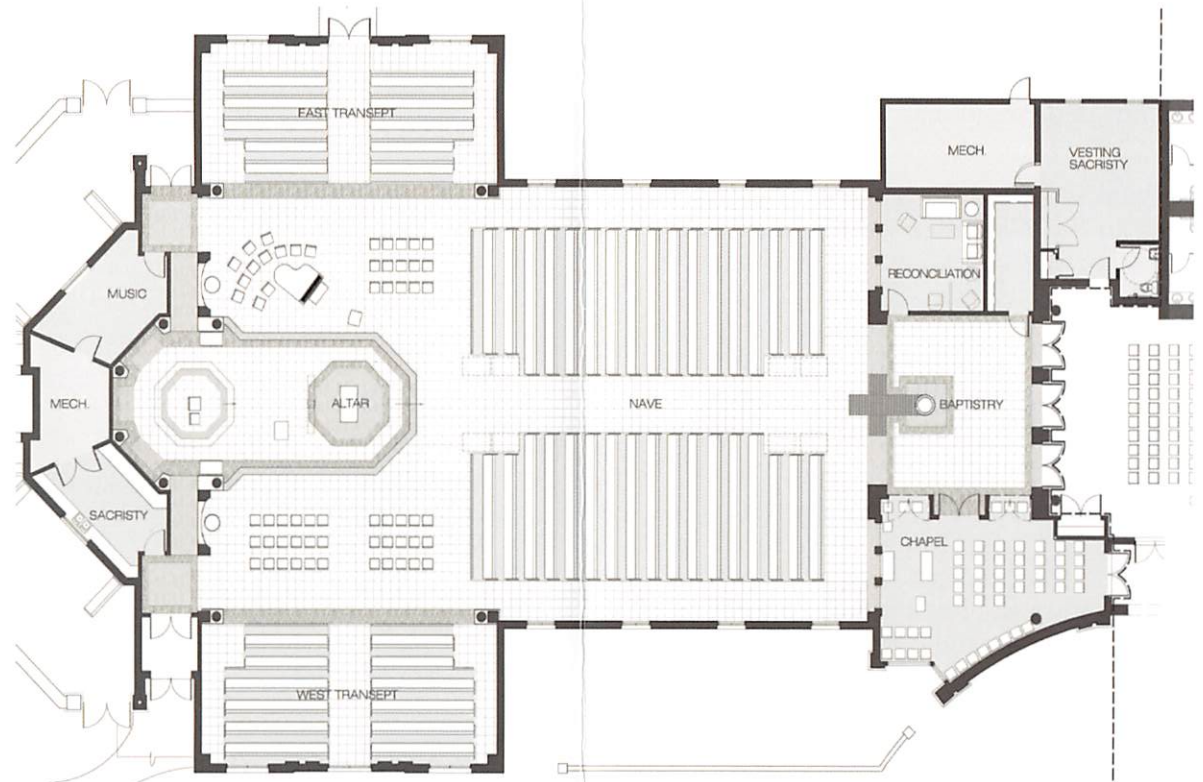
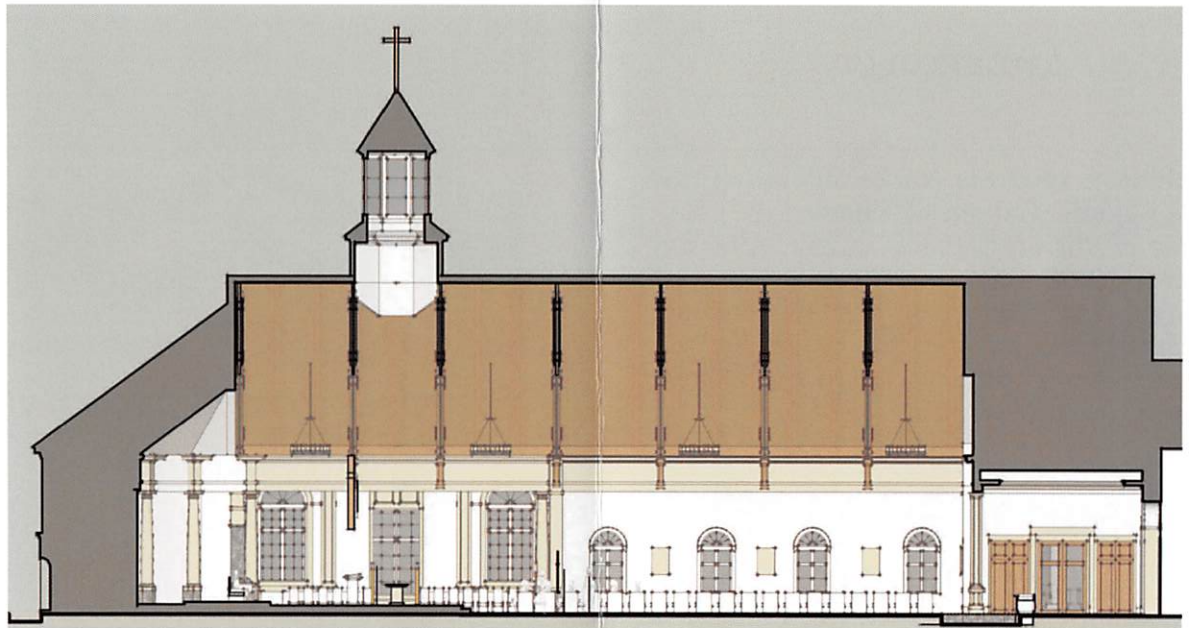
BUILDING DESCRIPTION

From the renovated commons one enters a baptistery, with a central, permanent baptismal font. The font will include an upper font for infant baptism and a lower font for adult baptism, covered by metal grates except during the Easter Vigil when adult baptisms occur. As one stands in the baptistery, a reconciliation room will be to the right. This room will also serve as a meeting place for small meetings or prayer groups.

To the left will be the Eucharistic/Daily Mass chapel that will seat 49 people. It will have a separate entrance on a key system to provide 24/7 access to the chapel for prayer and adoration. The chapel will have large windows which will visually link it to the main church. This space will also be available for small weddings or funerals which would be eclipsed in the main church.

The shape of the main church is cruciform, with a main nave and two transepts that intersect at the altar. The altar will be lit by natural light from the cupola located directly above. An ambo will be close to the altar to emphasize the connection of Word and Sacrament. The altar/ambo platform will be accessible by stairs or two discrete access ramps located behind two alcoves. Wood and metal trusses supporting the ceiling will draw the eye upwards. A curved apse will give the space a greater sense of dimension. Artwork will be placed throughout the space.

Stations of the cross will be placed on the walls, creating an ambulatory on the perimeter of the space. The choir will be to the right of the altar, to lead the community in song during worship.



To see larger diagrams of the project, go to www.stolaf.cc/building_plans

THE PROJECT

On June 1, 1992 the Norge mission of St. Bede Catholic Church was named St. Olaf, Patron of Norway Catholic Church. After 25 years in a multipurpose space that, in addition to Mass, has hosted religious education classes, Vacation Bible School and community dinners, our parish hopes to build a dedicated church building.

In addition to the main church this project will include

- Eucharistic/Daily Mass chapel
- reconciliation room
- vesting and work sacristies
- choir room
- renovated commons

Our goal is to build a church that will be fitting to the Mysteries we celebrate and a witness to the community of the faith we profess. The building will provide space for the growth of the community into the future, and be a legacy for generations to come. It will also allow our community to expand its outreach and parish activities to the current space.

The estimated cost of the project is \$4 million, not including furniture and artwork. The project will be funded by proceeds from the 2014 Living Our Mission capital campaign, and other contributions.

See our progress on

www.stolaf.cc/building_plans



PROPOSED COMPLETION DATE

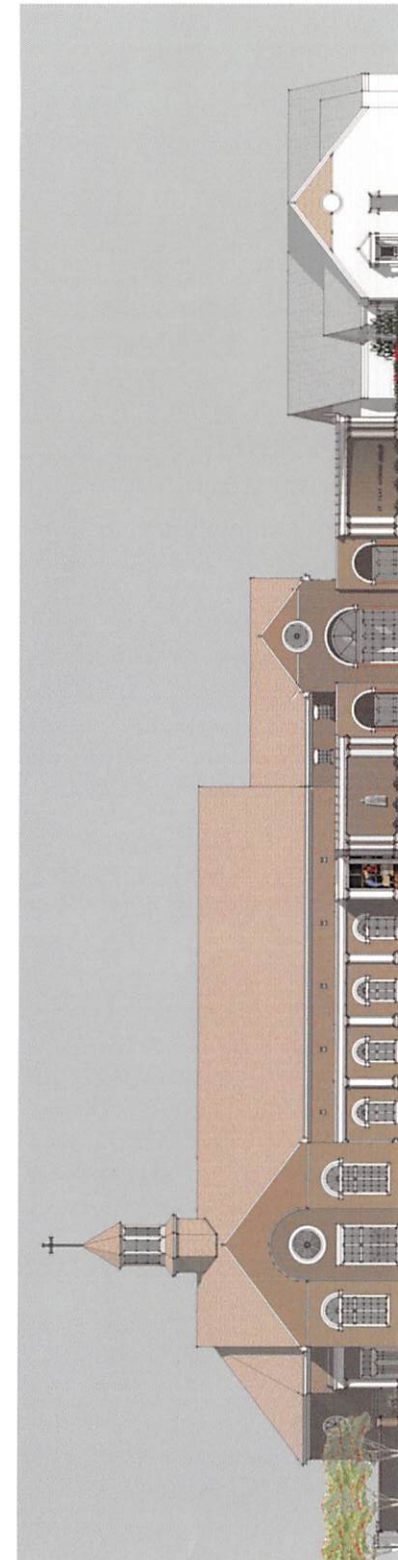
JANUARY 2017

To contribute please call the Office at
757-564-3819

St. Olaf, Patron of Norway Catholic Church
104 Norge Lane
Williamsburg, VA 23188

Architect:
HOPKE & ASSOCIATES, Inc.
Williamsburg, VA

Liturgical Consultant:
SACRED SPACES, LLC
Alexandria, VA



**St. Olaf, Patron of Norway Catholic Church
Church Construction Project 2016**