








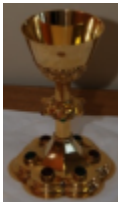







Altar Server Church Items

 <p>The area of the Church that contains the altar and the ambo.</p> <p style="text-align: center;">Sanctuary</p>	 <p>Two candles must be used for the celebration of Mass and they need to be placed near the altar</p> <p style="text-align: center;">Altar and Altar candle</p>	 <p>Where the Lector stands to read the Scripture readings and the priest or deacon proclaims the Gospel.</p> <p style="text-align: center;">Ambo (Lectern)</p>
 <p>A large red book that contains the Scripture readings for Mass.</p> <p style="text-align: center;">Lectionary Book</p>	 <p>a special book in which all the Gospel texts used in the liturgy are arranged for liturgical proclamation.</p> <p style="text-align: center;">Book of the Gospels</p>	 <p>A small round container used to carry the consecrated host (Eucharist), to the sick or those who are otherwise unable to come to church.</p> <p style="text-align: center;">Pyx</p>
 <p>A large safe-like container in the church that holds the Reserved Sacrament of the Body, Blood, Soul and Divinity of Christ. God, in the person of Jesus Christ, is truly present in the</p> <p style="text-align: center;">Tabernacle</p>	 <p>A wax candle, generally in a red glass container, and is kept burning day and night wherever the Blessed Sacrament is reserved in Catholic churches.</p> <p style="text-align: center;">Sanctuary Lamp</p>	 <p>The table that has the chalices, Communion bowls or patens, finger bowl, water cruet and finger towel.</p> <p style="text-align: center;">Credence Table</p>
 <p style="text-align: center;">Chalice</p>	 <p>Use to clean the chalice</p> <p style="text-align: center;">Purificators</p>	 <p style="text-align: center;">Paten</p>
 <p>Cover piece of cardboard used to cover a chalice</p> <p style="text-align: center;">Pall</p>	 <p>A piece of cloth used to cover the chalice</p> <p style="text-align: center;">Chalice Veil</p>	 <p>A receptacle made of two pieces of cardboard covered in fabric in which the folded corporal is carried to and from the altar.</p> <p style="text-align: center;">Burse</p>



...its purpose is to catch any small crumbs of the Blessed Sacrament that may fall onto the altar

Corporal



A cup, which looks similar to a chalice, but is used to store consecrated hosts in the Tabernacle. A Ciborium has a lid whereas a chalice does not.

Ciborium



Altar bells



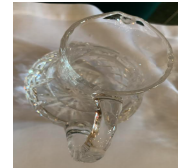
A towel that Father will use to dry his hands.

Lavabo Towel



This bowl is used to catch the water from washing the priest's hands.

Lavabo Bowl



A small pitcher/container that holds water with which the priest's hands are washed. Different from a flagon or cruet.

Lavabo Pitcher



The little pitcher that holds either water or wine for use during the Mass.

Cruets



The outfit worn by altar server knights

Cassock and Surplice



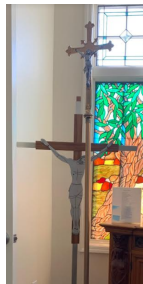
The white robe and a belt

Alb and Cincture



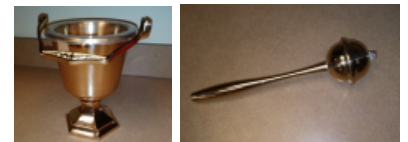
-A small liturgical vessel containing the incense that will be used with the thurible.
-A metal vessel for the ceremonial burning of incense.

Boat and Censer (Thurible)



A crucifix mounted on a staff, carried at Mass and other solemn services at the head of a procession of the clergy.

Processional Crucifix



used to hold holy water and sprinkle people and objects with holy water.

Aspergillum and Aspersorium