

St. Mary's Catholic Church



Our Parish Annual Report

From our Pastor

My Dear Brothers and Sisters in Christ,

This year has been like no other! COVID-19 has changed our lives. Last summer, we were severely limited to the amount of people we could have at Mass. Our school classrooms were operating with frustrating limitations as well. From the beginning of the pandemic, our thoughts were this: How can we bring the Church to those forced to stay at home? This pandemic has challenged us to be creative in serving you.



Live-streaming became more than just a Facebook post. It became “life” streaming to those who could not attend Mass. It allowed us to bring not only Mass, but funerals, weddings, and many other events to those unable to attend in person. As the COVID-19 restrictions are lifted, we are also lifted in spirit. We are happy beyond belief to be able to open the Church doors and welcome everyone home.

We are now open and invite you to attend Daily and Weekend Masses in person. As this past year proves, we never know what the future holds, and we are more confident now that no matter what, God will help us through.

I’m reminded of a cartoon that came out shortly after the initial closure of all public events. The picture was of God and the devil having a conversation. The devil says to God “Look! I managed to shut down all the Churches and no one is attending!” God’s response is “Yes, but I opened a new Church inside each and every home.”

As we learn to navigate through our changed world we are also making necessary changes to keep our parish as vibrant and life-filled as it has always been. Through many wonderful grants and donations, we have replaced the fence around our parking lot with plans to continue the fencing design through the entire campus. There will be a mini-pitch soccer field added to our continually growing list of amenities coming this fall.

We will be working diligently on parish security and hope to have increased and improved security measures in place including video surveillance and the implementation of a security committee to help monitor all the events, buildings, and perimeter of our parish community.

These are just a few of the many, many items at which we are looking to keep St. Mary’s thriving.

Our faith will get us through anything. Whatever comes next, the Catholic Church will hold fast and St. Mary’s will be at the front of the pack!

I remain your humble servant,

Fr. John Worster,

Pastor, St. Mary’s Parish



St. Mary's Catholic Church gathers to celebrate Mass every Tuesday through Friday at 8:30am, Saturday at 5:00pm & 7:00pm (Spanish) and Sundays at 8:30am, 10:45am, and 12:45pm (Spanish).

Reconciliation is scheduled Saturdays from 3:30pm – 4:30pm or by appointment.

We come together “where two or more are gathered in His name” to worship as one.

LITURGY AND WORSHIP

Our liturgies would be impossible without the time and talents provided by so many of our lay people. We are always looking for new volunteers to help with Masses each weekend. Getting involved in our liturgical ministries is such a great way to build up the Church! Among the ways to help out are hospitality, Eucharistic Ministers, Lectors, Altar Servers, Gift Bearers, Choir plus many more.



Are you looking to deepen your relationship with Jesus Christ or to start a relationship with Him? One of the best ways to accomplish this is through the Mass. No matter how long it has been since you have attended, you are always welcome at St. Mary's!

Our staff, deacons and priests are available to assist you every step of your journey.

Therefore, since we have this ministry through the mercy shown us, we are not discouraged. (2 Corinthians 4:1)

ST. MARY'S SCHOOL



Our school was one of the few schools to remain open throughout the COVID-19 pandemic. Although the staff and students had to get used to some new standards such as wearing masks and social distancing, they were successful in completing the year and our 8th grade class graduated with a Mass and graduation ceremony to mark the occasion.

We are inspired by our faith to teach just as Jesus did. Following His example, we work to meet our students where they are, with a rigorous curriculum presented in a fresh and exciting way. The curriculum aims to educate the whole child by focusing on critical thinking, problem solving, leadership, and resourcefulness. At St. Mary's, students lead by example and navigate their lives with genuine heartfelt kindness. The lessons students learn here stay with them for a lifetime.

Mission

Our mission is to provide a Catholic environment that offers academic excellence and prepares students for a lifetime of personal and spiritual growth, empowering them to become global citizens.

Vision

We will provide the space and opportunity for our students to build the character, conviction, and compassion that will carry them through a lifetime of learning, achievement, and meaning. The poise, confidence, and focus our students will develop at St. Mary's will propel them to great heights of achievement while providing the grounding they need to succeed in all areas of their life. Generous of

spirit, our students will be empowered to lead and serve as they embrace their moral and ethical responsibilities toward their communities and the world.

Why St. Mary's?

Academic Excellence

Academic Excellence. Our students are encouraged to become independent and critical thinkers, self-reliant, and resourceful. Only by thinking for themselves, understanding complex subject matters, and exercising creative problem-solving, can they meet the academic rigor necessary to excel in school and in life.

Welcoming Community

Enveloped by kindness, patience, and care, our students learn the value of civility, collaboration, and compassion. Modeling these values, teachers, parents, and students celebrate diversity and build relationships without regard to socioeconomic status, culture, or faith.

Characters & Values

We educate and nurture the whole child, developing both their character and mind, to produce well-rounded individuals with the poise and confidence they need to succeed. Our students learn to lead by example.

Adaptable Individualized Instruction

"One size fits all" suits no one well. We tailor the curriculum to meet the individual needs of each student. This approach is made possible by our small class sizes and dedicated teachers who inspire and challenge students to reach their highest potential.

Train a child in the way he should go; even when he is old, he will not swerve from it." (Proverbs 22:6)

ST MARY'S FOOD BANK

Our Food Bank was also very successful throughout the pandemic. The folks in our community realized the hardships many of our families would face due to COVID 19 and responded generously with time, talent and treasure.



Our mission is to provide food to needy individuals who come to us for help regardless of religious affiliation. We at St. Mary's Food Bank do what we can to ease the suffering of poverty and support the dignity of people whose circumstances bring them to our food pantry for assistance.

St. Mary's Food Bank is a volunteer organization that has provided emergency food services to the poor and needy since 1989. We are the primary food pantry, serving the poorest section of Ada County, Garden City and North Boise. Demographics in this area are comprised of immigrant, refugee, homeless, and poverty stricken families, most with children. We serve nutritious food boxes to our clients without bias. On average, we serve 1,200 individuals per month - 525 are children. We also meet the needs of numerous low income working families struggling to make ends meet, but earning a bit more than the required limits to qualify for assistance.

St. Mary's Food Bank provides emergency food assistance to our clients on a once a month basis. A typical family of four receives a 7 to 10 day supply of food. Each of these families are given a "personalized food pack" that addresses their particular needs.

St. Mary's Food Bank implemented a special custom-made program developed for us by Idaho State University. Using the federal "My Plate" guide as the standard for "nutritionally-balanced" meals, the team developed an easy-to-use point scheme to confirm that each of the five required nutritional categories (Grain, Dairy, Protein, Fruits and Vegetables) are represented in the box. SMFB strives to offer foods to provide 25% of a person's needs for a month based on the "My Plate" food guide that meet the Dietary Reference Intake (DRI) guidelines. Visit the Food Bank's website for more information. The link is on the church's page www.stmarysboise.org.



So Much More

MERCY WARRIORS

The intention of the Mercy Warriors ministry, as was St. Faustina's, is sharing with Our Heavenly Father in the saving of souls. Our Lord asked her to pray and offer the Chaplet of Divine Mercy for the dying. Jesus said, "Pray as much as you can for the dying... Be assured that the grace of eternal salvation for certain souls in their final moment depends on your prayer" (Diary, 1777). He said: "...encourage souls to say the chaplet which I have given to you. ... Write that when they say this chaplet in the presence of the dying, I will stand between My Father and the dying person, not as the just Judge but as the merciful Savior (Diary, 1541). St. Faustina wrote, "Space does not exist. It sometimes happens that I know about a death occurring several hundred kilometers away" (Diary, 835).

When a Mercy Warrior is informed of a person in his or her last days or hours, the group is notified and each member individually prays the Divine Mercy Chaplet specifically for that person. Our hope for the

future is that more families are made aware of our ministry so they will know to ask us to pray for loved ones when it is time. There is no monetary cost involved with this ministry.

HEALTH MINISTRY

It is the mission of St. Mary's Health Ministry to create an environment that fosters the prevention of illness and disease while focusing on assessing, and tending to, the physical and spiritual health needs of the members of St. Mary's parish and the surrounding community.

We have three coordinators.

Linda Bieker-Arkoosh coordinates our outreach programs and our group of volunteers, trained Health Ministers, and Faith Community Nurses, and Henry, a trained therapy dog who works along side his person, Dr. Denise Mills. She monitors and runs the checks on our Automated External defibrillators (AEDs).

Outreach support includes visits to our parishioners who are homebound, hospitalized, or living in facilities. Visits may include assisting parishioners to:

1. Access community resources (medical care/supplies, medication, food, transportation, housing, and household goods/supplies, and legal services).
2. Advocate for their care and support.
3. Navigate our medical system, including attending doctor visits and interfacing with home health services/hospice.
4. Wellness checks and spiritual support, including coordinating access to the Eucharist.
5. Monitor their care in facilities, provide spiritual support in facilities.
6. Personal visits for general companionship and grief support.

Christine Running coordinates all in-house health and wellness education events and classes, bulletin boards, blood pressure clinics, and first aid boxes. She also mentors new Faith Community Nurses and Health Ministers and staffs St. Mary's first aid stands when we have large events. Most recently we held two COVID-19 vaccination clinics and we look forward to restarting our after-Mass Blood Pressure clinics.

Teresa Sanchez-LaRosa coordinates health and wellness events and personalized care for our Spanish speaking population. Our team makes an effort to include both English and Spanish speakers in all our events. Teresa is key, with the support of our Spanish speaking Health Ministers, in keeping us united, as one family.

Like many small ministries for the most part we work behind the scenes but we want everyone to know we are willing and available to assist our fellow parishioners in any way we can.

DEVELOPMENT AND FINANCE COUNCIL (DFC)

Under the Canons from the 1983 Code of Canon Law, the DFC is comprised of seven (7) voting members of the parish who represent all areas of our community. Deacons, school parents, and parishioners both English and Spanish speaking make up the council. Non-voting members include our Pastor, Facilities Manager, Business Manager, Food Bank Representative and the School Principal.

The DFC's mission is to implement and oversee a continuous total study of the Spiritual, Human and Material characteristics of St. Mary's Parish, Food Bank, and School. They have a specific interest in identifying the God-Given gifts of Time, Talent and Treasure that are possessed by all the women and men who choose to associate themselves with our geographic and spiritual parish landscape. They are constantly refining the Parish's Vision, Mission and Goal Areas synchronizing when possible with the Pastoral Plan of the Roman Catholic Diocese of Boise (RCDB).

The council supervises the preparation of all necessary budgets, and monitors them through monthly reports and financial statements. They directly supervise and support the activities of our Primary Ministry Initiatives that St Mary's supports (Appendix A) and oversee the design, coordination, prioritization and implementation of all parish fund raising activities.

The current members of the DFC for the 2021-2022 fiscal year are (at the time of this printing, the DFC is looking for one more member):

Voting Members:

Merikay Jost (Chair)
Lynn Sprague
Rourke O'Brien
Liliana Tena
Julia Grant
Deacon John Carpenter

Non-Voting Members:

Fr. John Worster (Pastor)
Brian Olmes (Principal)
Monica Pittman (Business Manager)
Mike Dambach (Facilities Manager)
Bob Ancin (Food Bank Representative)

*My God will fully supply whatever you need, in accord with his glorious riches
in Christ Jesus. To our God and Father, glory forever and ever. Amen.*

(Philippians 4:19-20)

OTHER MINISTRIES

St. Mary's has many, many areas where someone can become actively involved in our vibrant parish life. Please feel free to contact any of these groups. If you would like more information or have questions call the Parish Office at 208.344.2597 and the folks that answer the phone can provide you with information or contact names for any of our ministries.

Eucharistic Minister	Lectors
Altar Servers	Cantors / Choir / Musicians
Adoration	Prayer Network
Knights of Columbus (English and Spanish)	Hispanic Council
Landscape	Church Cleaning
School Advisory Board	School Finance Working Group
Collection Counters	Office Volunteers
Holy Conversations	Bible study (English and Spanish)
RCIA (Rite of Christian Initiation of Adults)	RCIC (Rite of Christian Initiation of Children)
Hospitality / Ushers / Greeters	Parish Security
Catechist	



By the Numbers



54,000+
Volunteer Hours



69
Baptisms



19
Weddings



22
Funerals



69 New Families

3,573 Families



153

1st Communions



185

Confirmations



42+

Gallons of Hand
Sanitizer



4000+

Masks

Financials

Dear St. Mary's Parishioner,

What a year! This past year has proven to be quite the challenge as we continue to work through the pandemic and the obstacles it has caused. Offices were closed and staff had to work from home. Masses were suspended for weeks on end. Offertory suffered. Though some expenses were eliminated due to lack of activity, many still had to be paid: We still had salaries, utilities, and maintenance to perform. And we had to realistically plan for the next fiscal year with a bleak forecast.

A few of the more significant actions we took: No staff salary increases, No retreat funding for staff, our Director of Religious Education position was eliminated, as was the bookkeeper position, and budgets for most departments were cut to the bare minimum. Gratefully, we do not have any loan balances on our buildings. We also took the unprecedented step of applying for and receiving the PPP loan from the federal government, which allowed us to continue to pay our staff.

Thank you to all who contribute to our parish! This has helped greatly during a time that just a small fraction of our parish family is physically present at Mass. If you are not yet using WeShare, our online giving program, please consider doing so now. It is easy for you and very beneficial for the parish.

As you can see in the fiscal report, we have weathered the pandemic fairly well so far. We pray that the cuts we made for this current year are adequate, but allow for effective ministry to our large flock. We are blessed with dozens of dedicated ministry leaders who have found creative means to maintain unity during this time of isolation. And our wonderful clergy and staff work together each day to meet the various needs of the parish through the most essential aspects of parish life: liturgies, sacramental preparation, religious education, and more.

Thank you for all you do as a member of our parish family! It is only through the generous sharing of your financial resources, your engagement in parish life, and your faithfulness to the teachings of Christ that enable this parish to exist and glorify God in all we do.

Monica Pittman

Business Manager

St. Mary's Parish



Restored

I will turn their mourning into joy, I console and gladden them after their sorrows. Again, I will restore you and you shall be rebuilt (Jer 31:13,4)

Annual Report

FISCAL YEAR 2021 (7/1/2020 – 6/30/2021)

Church

Source of Funds	Fiscal Year 2021	Budget
Offertory Collections	\$553,757.17	\$605,000.00
Special Collections	38,975.40	13,695.00
Bequests / Gifts / Grants	24,737.44	0.00
Fees for Services	14,221.00	28,000.00
Sales Revenue	-240.00	1900.00
Rel. Ed. Tuition	100.00	1500.00
Other Revenue	2582.18	7500.00
Unrelated income	800.00	800.00
Total Source of Funds	\$634,932.69	\$658,395.00

Use of Funds		
Personnel Costs	\$238,601.34	\$246,200.00
Payroll Taxes	18,807.82	19,106.00
Employee Benefits	107,968.41	101,330.00
Employee Travel	2,749.18	5000.00
Conferences/Conventions	70.85	300.00
Assessment	19,294.13	30,650.00
Liturgy	6,860.28	14,500.00
Educational Expenditures(Subsidies)	207,903.61	218,255.00
Evangelization	3,078.02	12,450.00
Computer/Data processing	4,241.53	4,150.00
Furniture, Fixtures, Equipment	6,961.91	5,000.00
Physical Plant	2,534.25	2,000.00
Maintenance / repairs	23,040.37	26,250.00
Utilities	21,961.35	25,300.00
Administrative Expense	31,432.09	39,705.00
Other Expenses	7,503.59	7,770.00
Total Use of Funds	\$703,008.73	757,996.00

Food Bank

Source of Funds	Fiscal Year 2021	Budget
Offertory Collections	\$88,947.11	67,000.00
Special collections	0.00	20,000.00
Bequests/Gifts/Grants	66,588.58	20,000.00
Sales Revenue	0.00	120.00
Other Revenue	3641.66	1200.00
Unrelated income	2500.00	0.00
Total Source of Funds	\$161,677.35	108,320.00

Use of Funds		
Personnel Costs	\$20,400.00	\$20,400.00
Payroll Taxes	1837.52	1968.60
Employee Benefits	10,403.40	10,282.02
Vehicle expense	4,602.53	7,950.00
Food/sundries purchases	17,689.08	36,000.00
Computer/Data processing	99.99	0.00
Furniture/Fixtures/Equipment	2,878.44	4,500.00
Physical Plant (Rent)	16,260.00	16,260.00
Maintenance/Repairs	627.83	2,400.00
Utilities	8,509.15	8500.00
Administrative Expense	3,427.43	7,375.00
Other Expenses	1400.20	38.40
Total Use of Funds	\$88,135.57	\$115,674.02





**ST. MARY'S
CATHOLIC SCHOOL**

*Academic Excellence
in a Catholic Community*

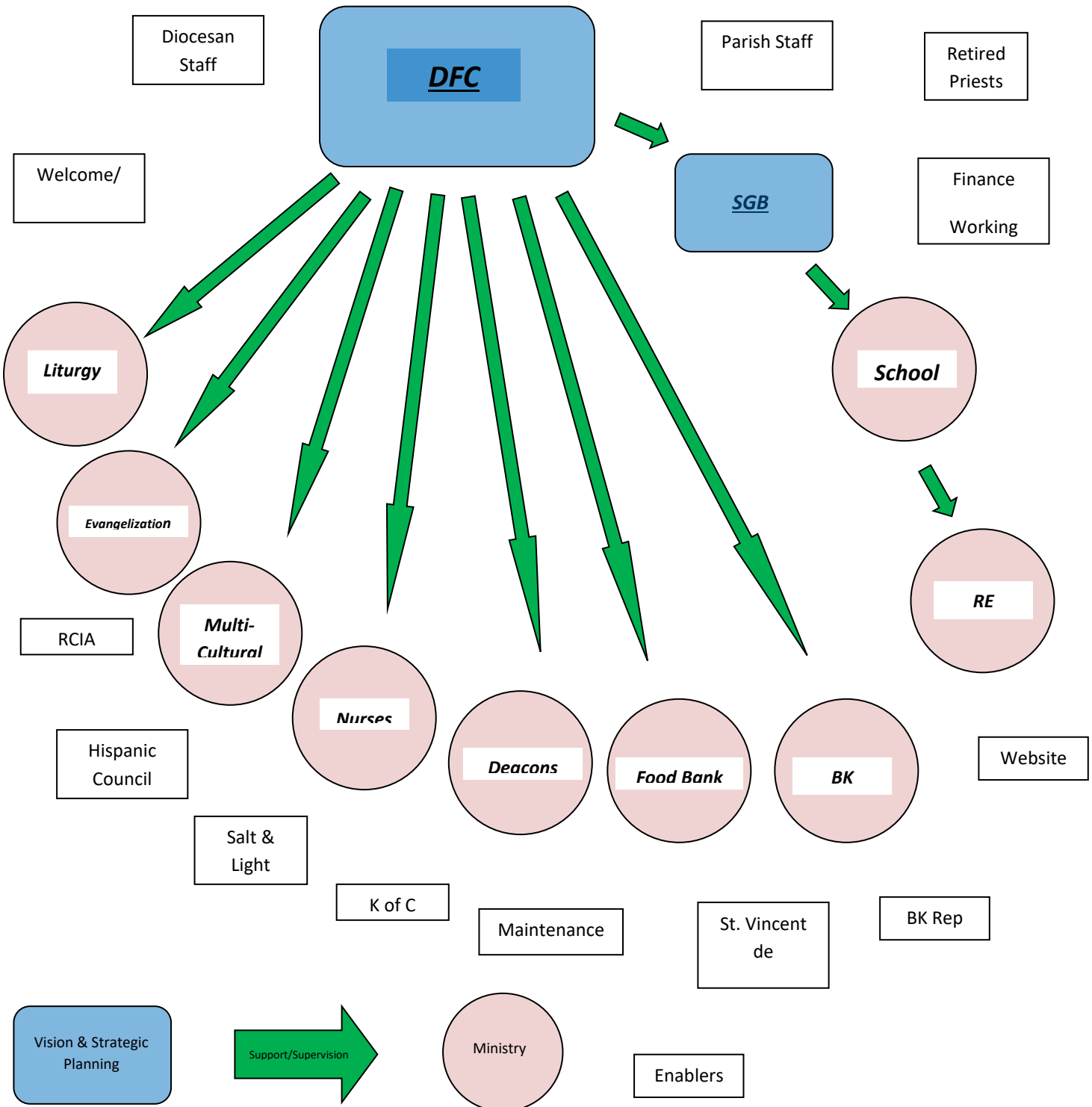
School

Source of Funds	Fiscal Year 2021	Budget
Subsidies and Donations	\$426,196.00	\$320,700.00
School envelope donation	8317.00	0.00
Activities/Sales	112,437.33	21,700.00
Tuition and Fees	659,616.46	715,800.00
Services	9,172.72	0.00
Total Source of Funds	\$1,215,739.51	\$1,058,200.00

Use of Funds		
Misc Building Maintenance	367.00	0.00
Postage/mailing supplies	57.15	0.00
Office/Teaching supplies	2,523.19	0.00
Bank Service Charge	0.00	250.00
Administrative & Operational	185,635.12	81,825.00
Facilities & Equipment	52,211.51	15,000
Insurance	7359.60	8180.00
Salaries/Wages/Related	959,455.92	926,126.00
Utilities	16,895.31	15,100.00
Total Use of Funds	\$1,224,504.80	\$1,046,481.00

Appendix A

St. Mary's Parish Boise, Idaho Organization for Ministry





St. Mary's Catholic Church
2604 W State St
Boise, ID 83702
(208) 344-2597

St. Mary's School
2620 W State St
Boise, ID 83702
(208) 342-7476

St. Mary's Food Bank
3890 W State St
Boise, ID 83703
(208) 345-2734

stmarysboise.org

stmarys-boise.org

stmarysfoodbankboise.com

