



Garden & Landscape Ministry Mission Statement:

Hospitality is foremost at Queen of All Saints, and the mission of the Garden and Landscape Ministry is to provide a welcoming environment to inspire worship, prayer and fellowship for our parishioners and guests. Ministry members and volunteers share a vision to keep our garden and landscape areas neat and attractive, mainly spring through fall. If you would like to share in providing a welcoming environment at Queens, please contact (Mrs.) Lee Bober, Chairman, at (219) 608-1976 or leebober@comcast.net





Matching gift opportunity



The Garden & Landscape Ministry has received an opportunity for matching funds, dollar-for-dollar, up to \$2,500. This could provide a potential donation of \$5,000 towards continuing our professional landscape plans. As Queen of All Saints is a 501(3)c organization, all donations are tax deductible.

Ways to Adopt a Garden:

Donation to General Fund - goes toward remaining garden plans

"Adopt A Barrel" - \$35 each - 13 barrels available. Can be marked "in memory of." This would be an annual fundraiser.

"Adopt a Bench" - \$1200 each - 2 benches available.

NOTE: All donations would be applied toward the matching funds.

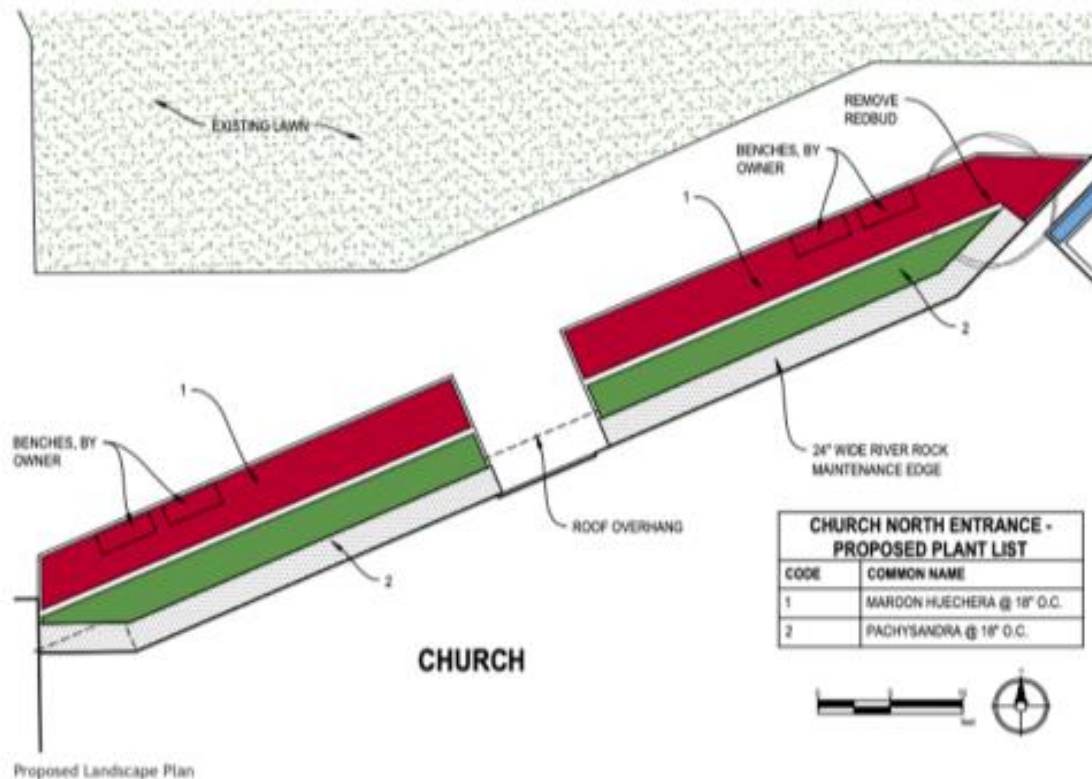


PEA Plan for Front of Church:

Planned Environment Associates (PEA) commissioned to provide landscape designs for garden areas on Queens campus. A part of Phase 1 of the proposal has been completed:

Church (North)

5



The north entrance to the church contains a beautiful relief mural on the facade. The plan recommends a very simple landscape to accent and frame the mural, not distract from it with a busy ground plane. The design includes a simple evergreen ground cover near the building, with a border of maroon Heuchera to coordinate with the building trim color.

The following page provides recommendations for the other foundation areas around the church.

Completed Project Following the PEA Plan:





Before

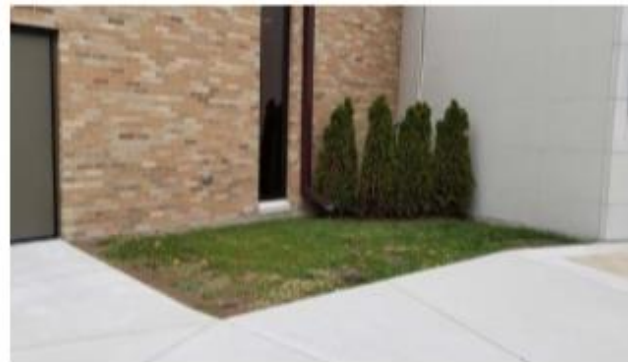
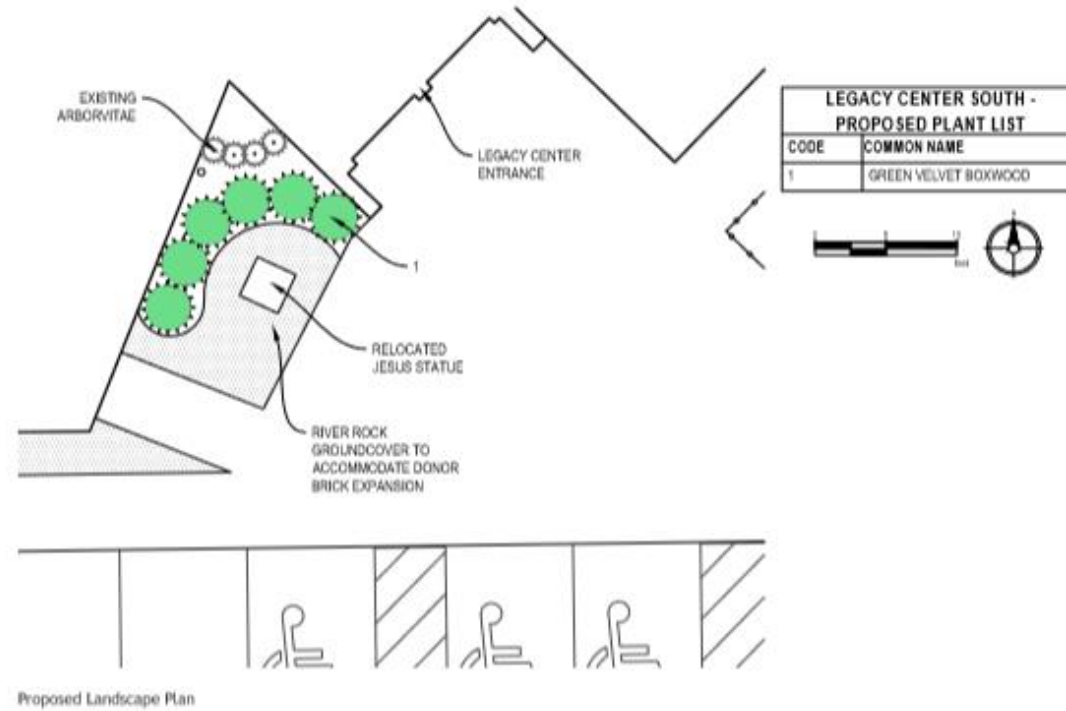


After



Legacy Center (South)

7



The south entrance to the Legacy Center will be the home to the relocated Jesus statue, currently near the Rectory. In addition, this space also wants to serve as additional donor brick recognition area. The plan recommends a simple backdrop of boxwood for evergreen color in the space.

Continue Implementation of PEA Landscape Design:

- Install river rock around barrels on east and west sides of the school:



- Install river rock around Christ the King Statue:



Moving Christ the King from the Parish Support Center to the Chapel



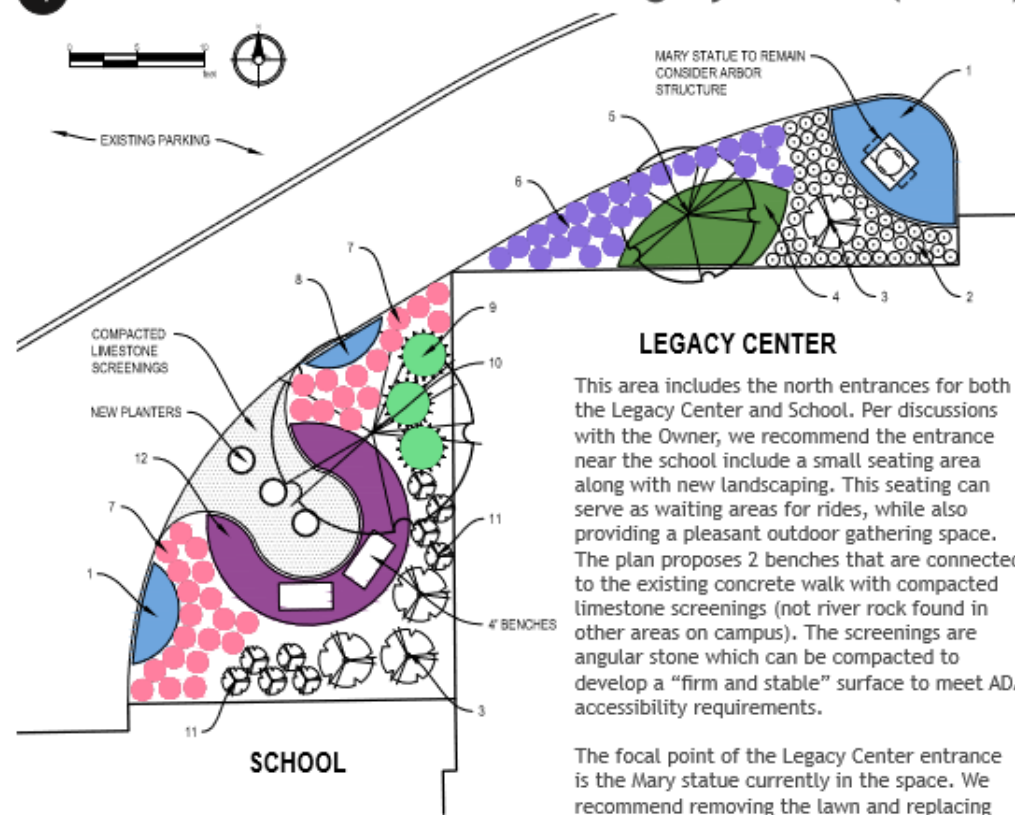


Future Plans Include:

Phase 2: Develop a prayer garden to be located on South side of Legacy Center.

Phase 3: Update landscape design in the courtyard





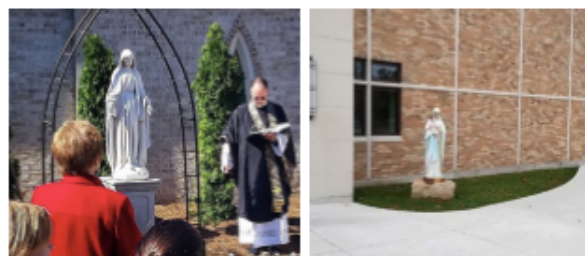
LEGACY CENTER

This area includes the north entrances for both the Legacy Center and School. Per discussions with the Owner, we recommend the entrance near the school include a small seating area along with new landscaping. This seating can serve as waiting areas for rides, while also providing a pleasant outdoor gathering space. The plan proposes 2 benches that are connected to the existing concrete walk with compacted limestone screenings (not river rock found in other areas on campus). The screenings are angular stone which can be compacted to develop a "firm and stable" surface to meet ADA accessibility requirements.

The focal point of the Legacy Center entrance is the Mary statue currently in the space. We recommend removing the lawn and replacing with a mixture of flowering perennials. Additionally, a small Japanese maple tree is proposed to provide some contrasting color and height within the space. An arbor for the Mary statue, similar to the picture below, is being considered by the parish.

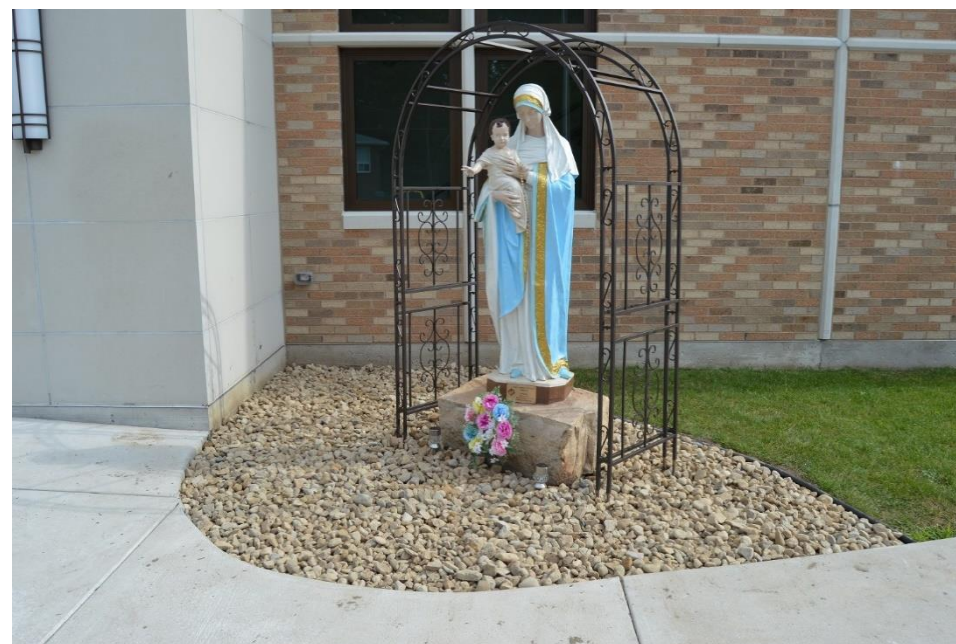
Contractor to evaluate hose-bib controller pack drip irrigation system at this location.

SCHOOL & LEGACY CENTER NORTH - PROPOSED PLANT LIST	
CODE	COMMON NAME
1	TULIP & DAYLILY MIX
2	SWEET WOODRUFF
3	BOBO HYDRANGEA
4	PACHYSANDRA @ 18" O.C.
5	CRIMSON QUEEN JAPANESE MAPLE
6	ROZANNE GERANIUM
7	CUTTING EDGE TIARELLA
8	TULIP & DAYLILY MIX
9	KALLEY'S COMPACT JUNPER
10	KOUSA DOGWOOD
11	KARL FOERESTER GRASS
12	JIRIHOPE @ 18" O.C.





Installing an arbor and river rock around the Blessed Mother



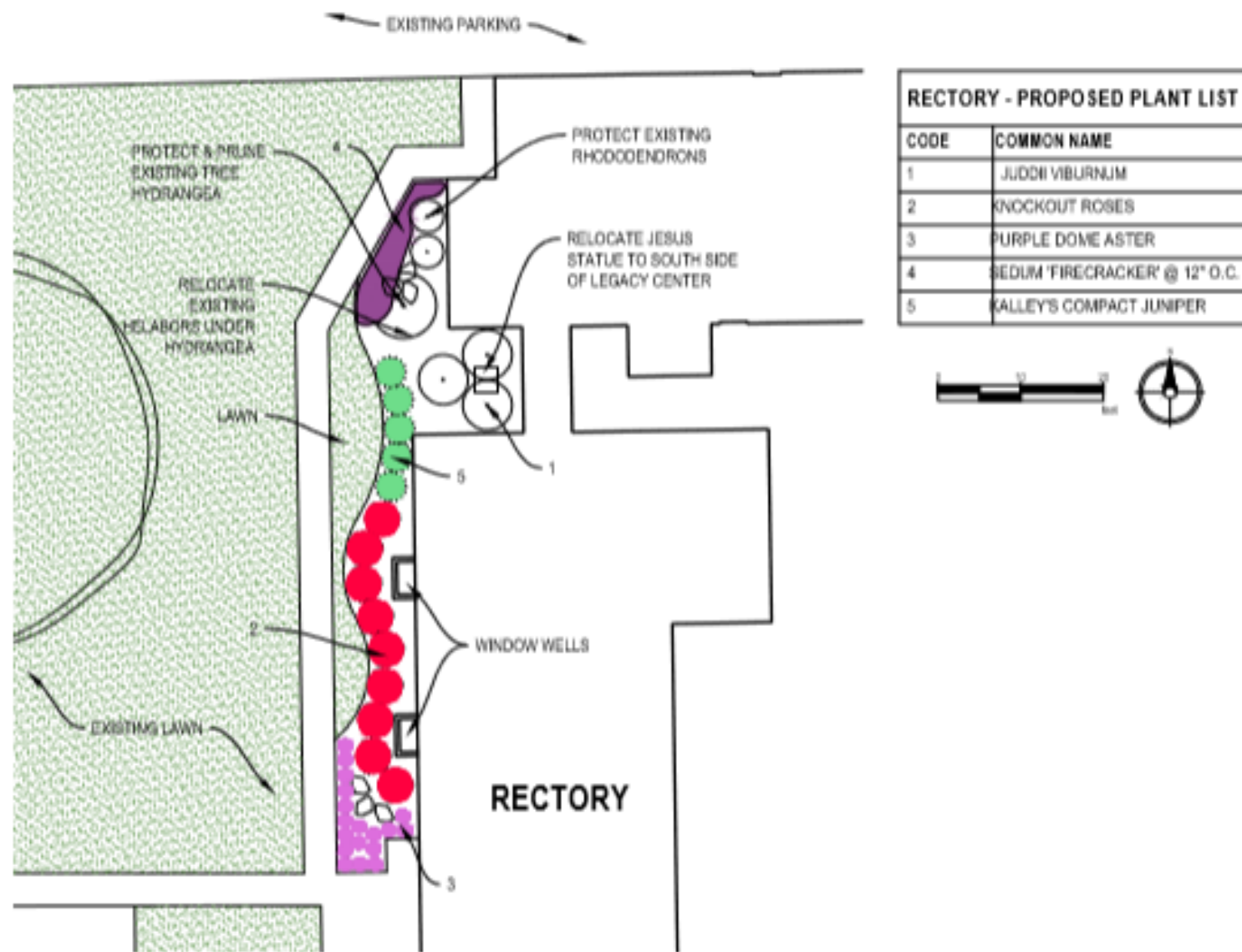


Installing Irrigation



Rectory

1

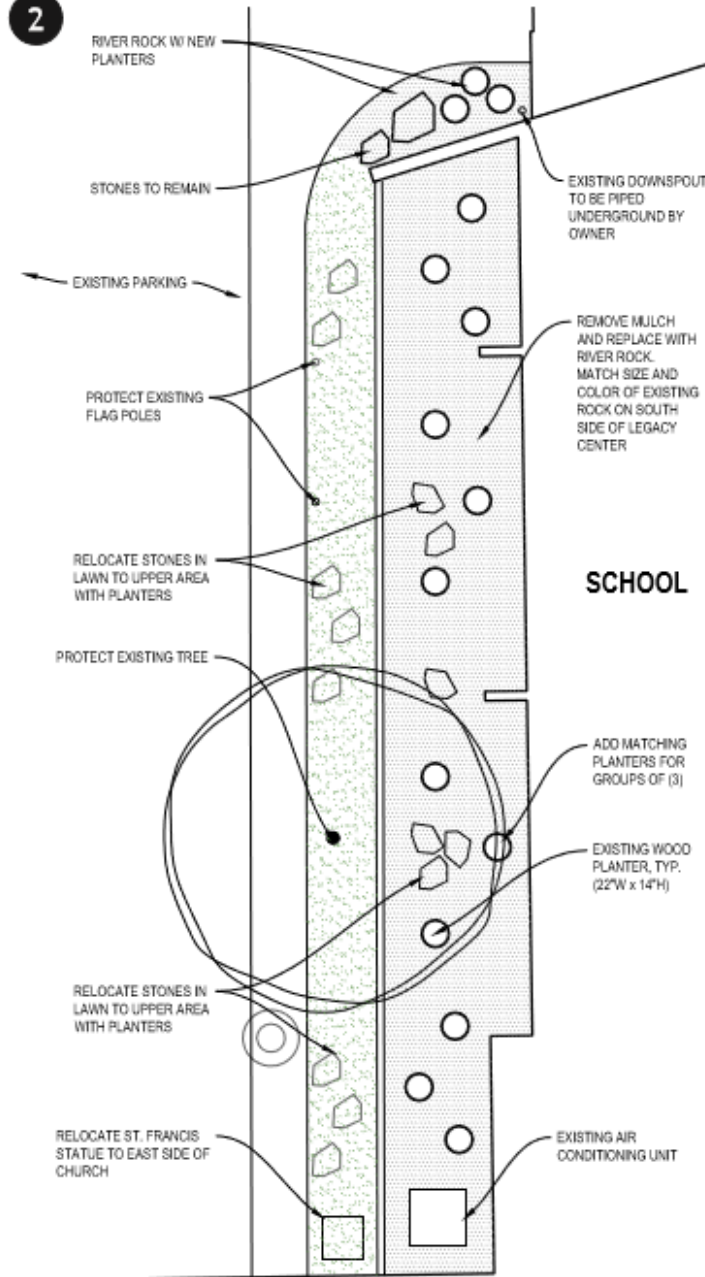


Proposed Landscape Plan



Planting mums, fall 2019

2

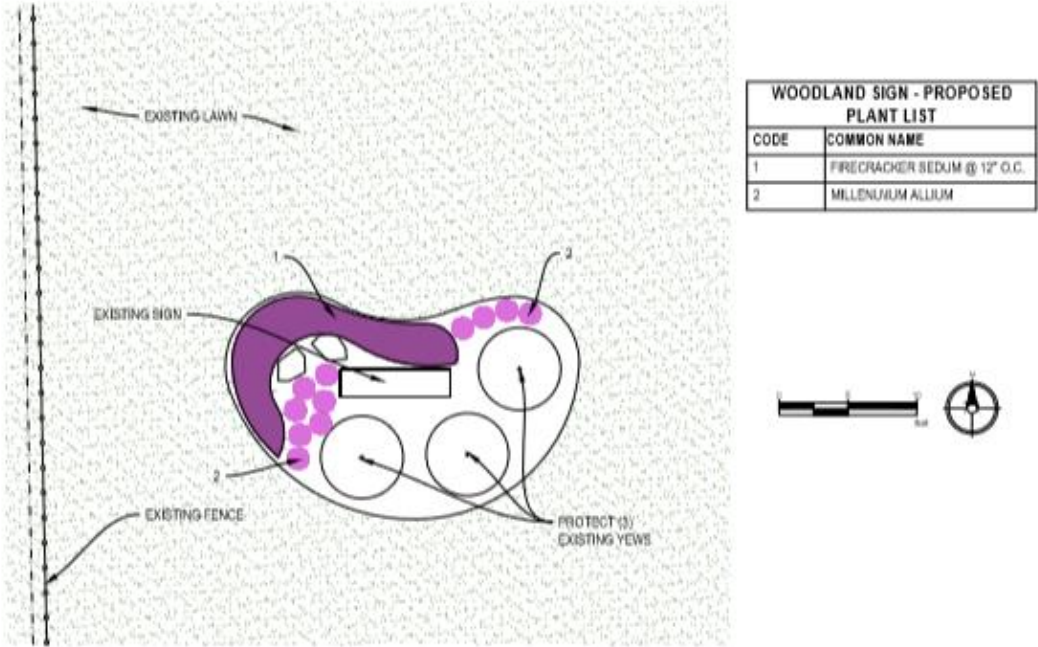


School (West)

The west facade of the school is primarily lawn and the raised bed area with wooden planters. The mulch in the raised planter should be replaced with river rock to match the size and color recently installed on the south side of the Legacy Center. Existing stones in the lawn space should also be relocated to simplify mowing procedures in this area. The St. Francis statue will also be relocated to the east side of the church.

The downspout near the school entrance will be piped underground to connected to existing storm drainage to prevent ponding in this area. We recommend removing the existing plant materials and replacing with additional planters and boulders, to provide some color interest at this entrance.

Contractor to evaluate hose-bib controller pack drip irrigation system at this location.



Proposed Landscape Plan



The landscaping at the existing sign along Woodland Avenue was reviewed as part of this project. We recommend all existing plant materials (except the yews) and edging be removed and replaced with the proposed plan shown above. The proposed plan includes a variety of drought-tolerant plants to ease maintenance and provide different colors and textures throughout the season.