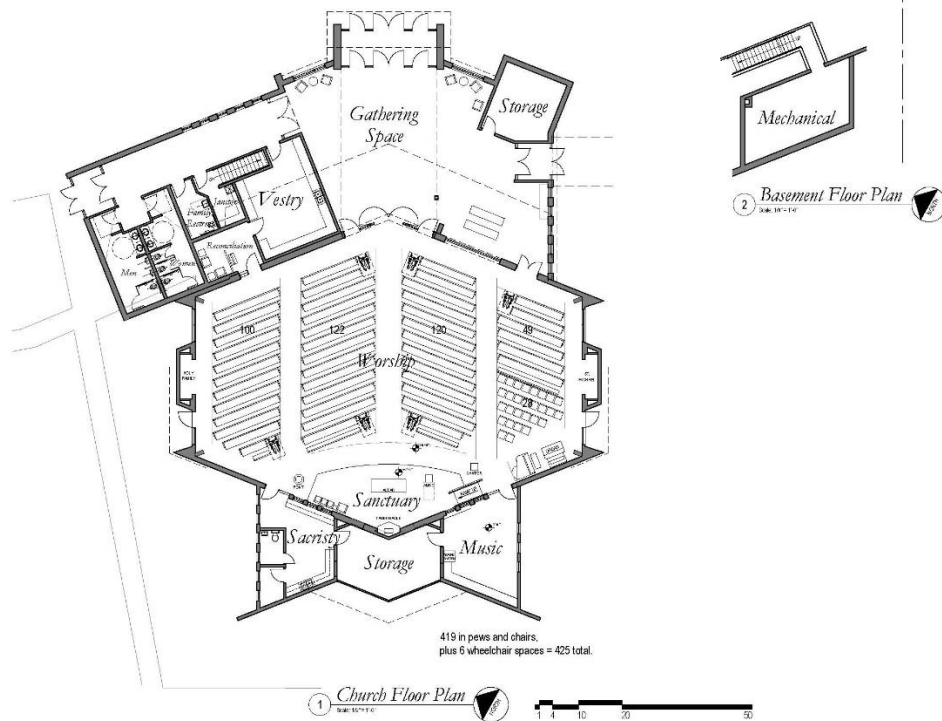


Overall site map





View of the Altar and Sanctuary. St. Michael window remains in place.



Alternate view of Sanctuary.



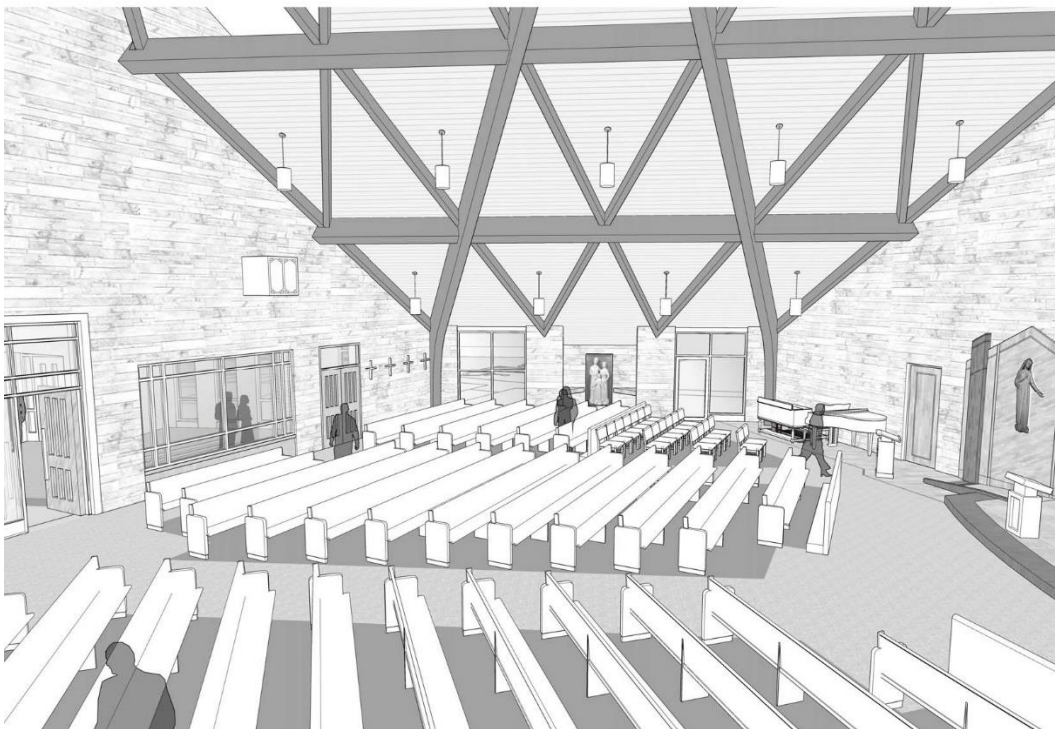
View to the back of church to the main entrance. Main doors in center. Confessional door to the left, secondary entrance to cry room area to the right.



View of entrance into church from the new narthex.



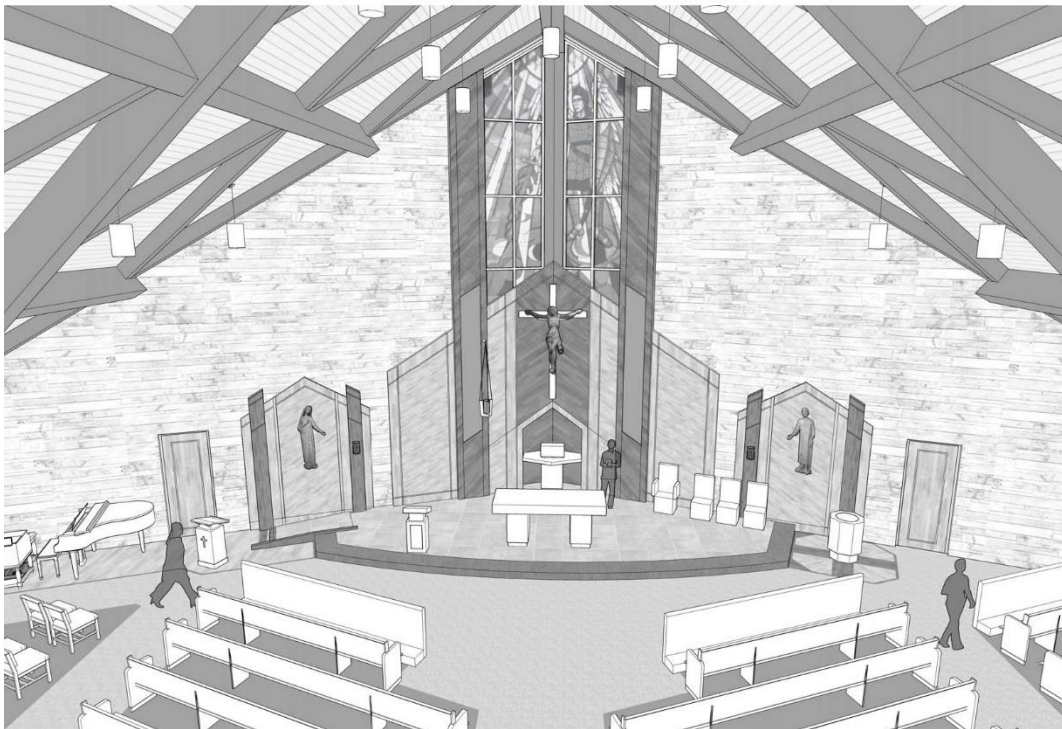
View from the altar near baptismal font.



Birdseye view from St. Michael shrine side.



Additional view of the Sanctuary with music area and baptismal font.



View of the Altar and Sanctuary. St. Michael window remains in place.



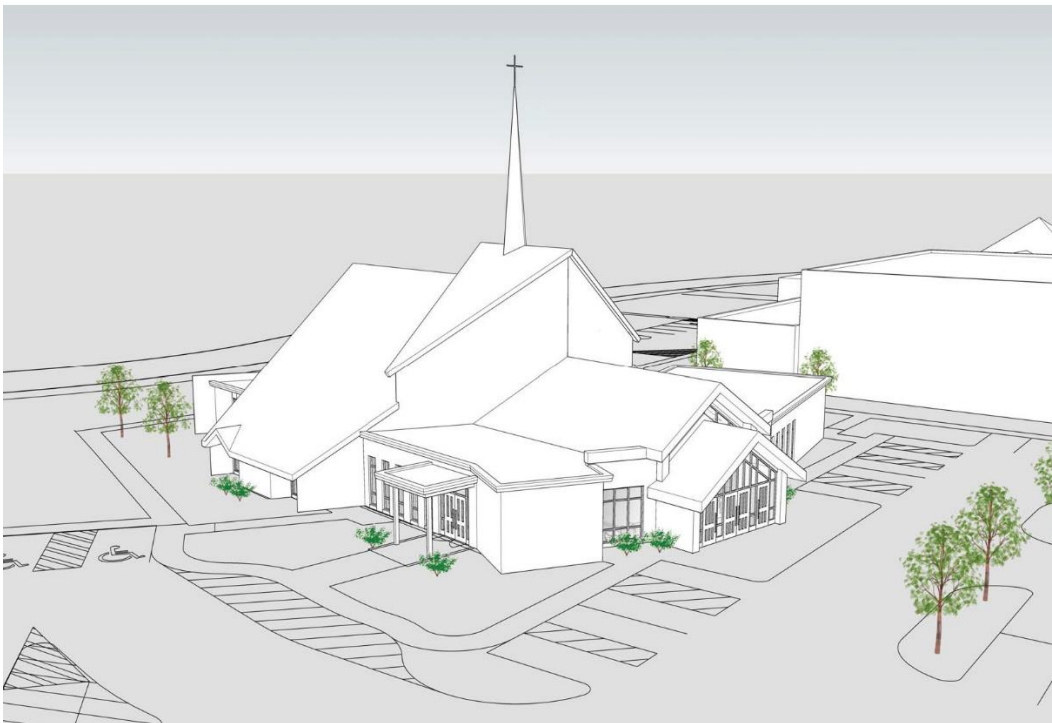
New narthex (gathering area) outside the Sanctuary.



Additional view of the narthex shows there is room for overflow seating.



View from the narthex of the north exit door.



View of narthex (gathering space) and main entrance from the water tower.



View of narthex (gathering space) and main entrance from the water tower.



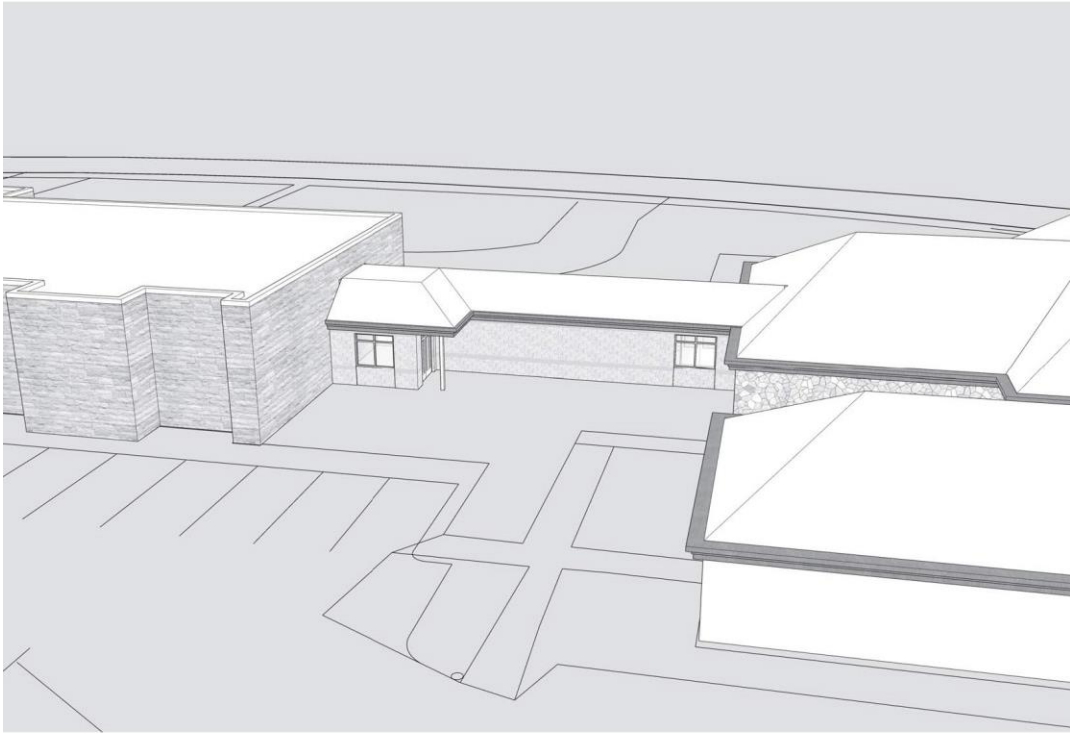
View of the south entrance from the parking lot.



View of the main entrance and narthex from the parking lot.



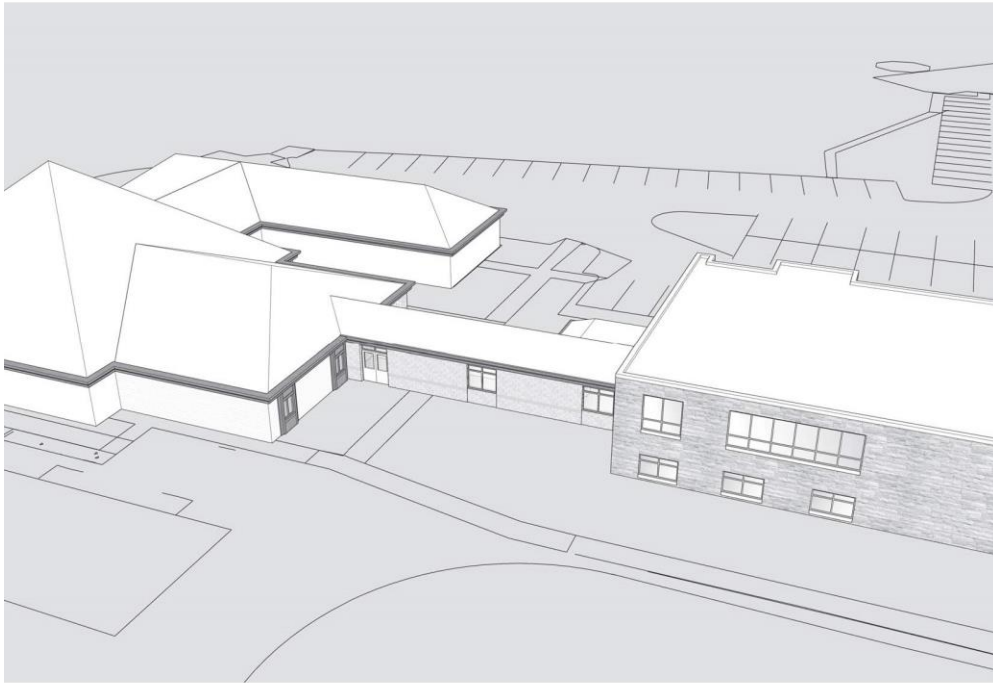
View of the main entrance and narthex from the parking lot.



Connector from school building to Nolan Hall looking toward Jefferson Blvd.



Connector from school building to Nolan Hall looking from Jefferson Blvd.



Birdseye view of connector from school building to Nolan Hall looking from Jefferson Blvd.



Ground view of connector from school building to Nolan Hall looking from Jefferson Blvd.



Ground view of connector from school building to Nolan Hall looking toward Jefferson Blvd.