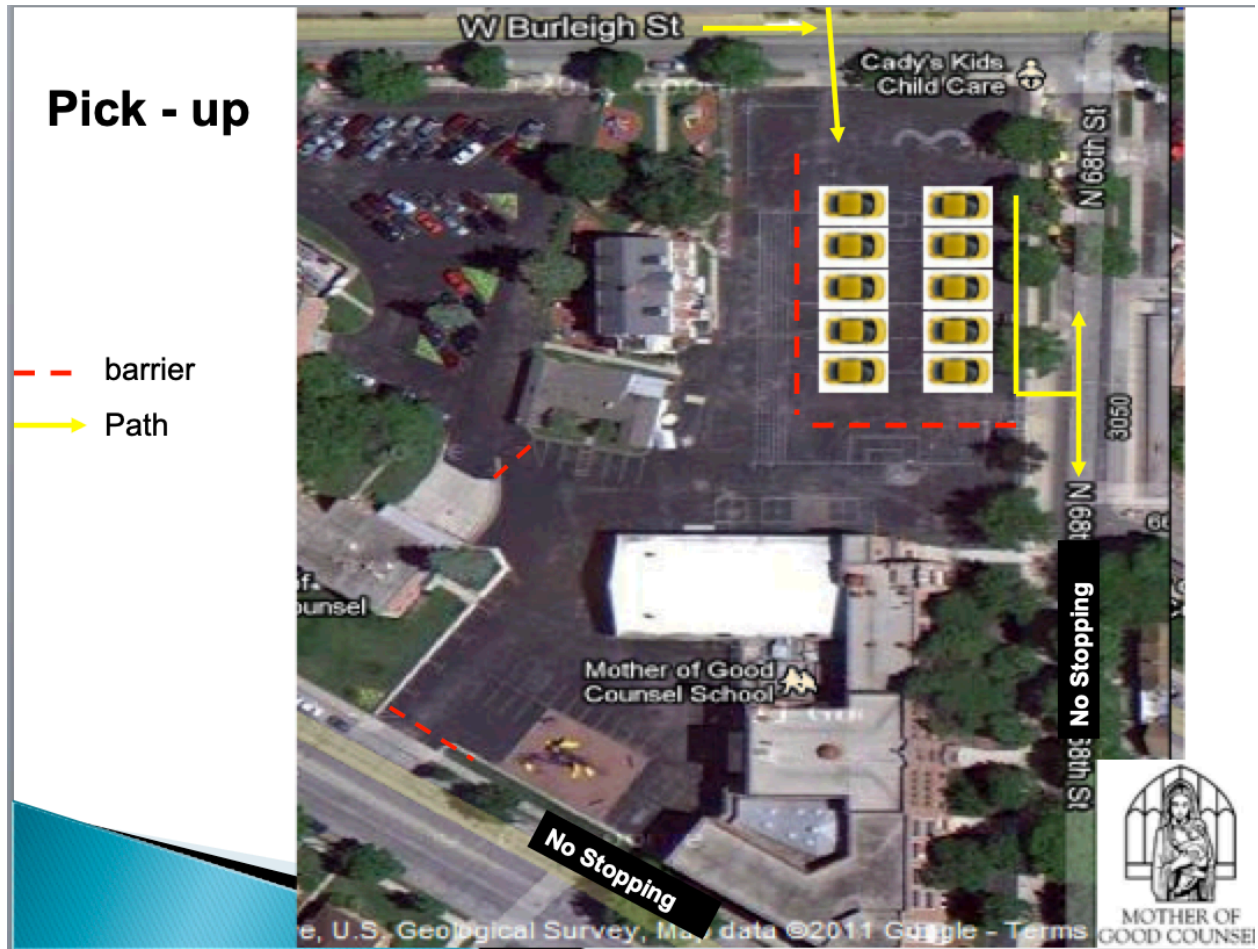


Pick Up Procedures



Vehicles will enter the north lot through the gate off of Burleigh. Vehicles will be allowed to park on the playground facing 68th Street in rows. Please pull forward as far as possible. Vehicles will exit through the gate on 68th Street.

Parents who drop off in the church parking lot may use either lot for pick up. If you are using the church parking lot you must use the parking places outlined in the lot. Just make sure your child/ren know where you will be parked.