

Church of Transfiguration

3- 5 Year Planning Process

June 2-3, 2018

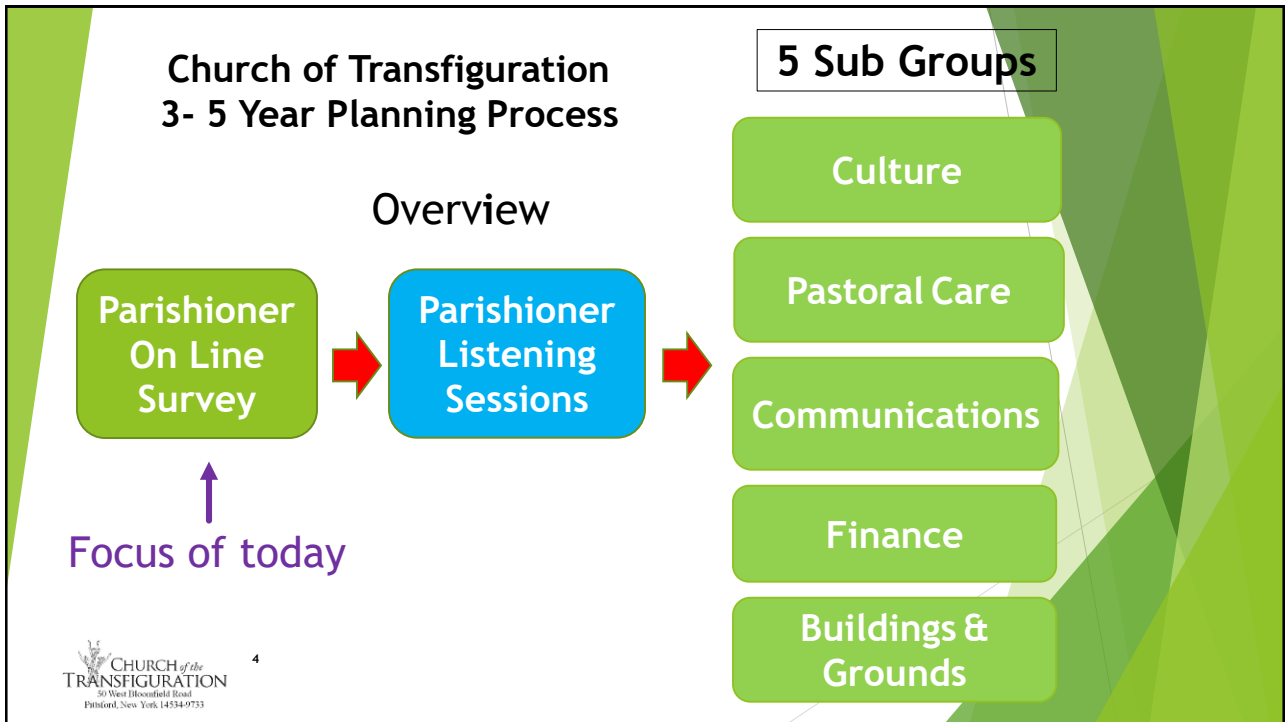
Church of Transfiguration

3- 5 Year Planning Process

Background

Why do a 3- 5 Year Plan?

1. For the health of the parish - to keep us vital and to inspire the next generation to be more involved and take increasing ownership of the parish.
2. To prepare for the change of leadership expected in the next 1-3 years.



Church of Transfiguration 3- 5 Year Planning Process

Parishioner On Line Survey

- Consultant LPI assisted with the process
- Offered in October-November 2017
- On-line and via paper
- 30 Questions
- Questions were mostly LPI standard, so we could compare to other churches
- 7 -10 Minutes to Complete
- 378 Responses

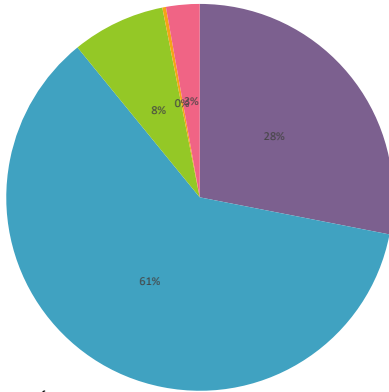
CHURCH of the TRANSFIGURATION
 50 West Blossfield Road
 Pittsford, New York 14554-9733

5

Church of Transfiguration 3- 5 Year Planning Process

Parishioner
On Line
Survey

Am I fed spiritually here at the parish?



- All the Time
- Most of the Time
- Seldom
- Never
- Not Sure

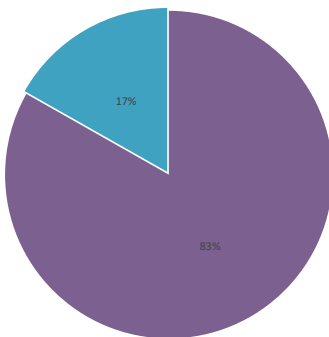
89% positive

6
CHURCH of the
TRANSFIGURATION
50 West Bloomingfield Road
Pittsford, New York 14534-9733

Church of Transfiguration 3- 5 Year Planning Process

Parishioner
On Line
Survey

Do I see the parish as mine or theirs?



- Mine
- Theirs

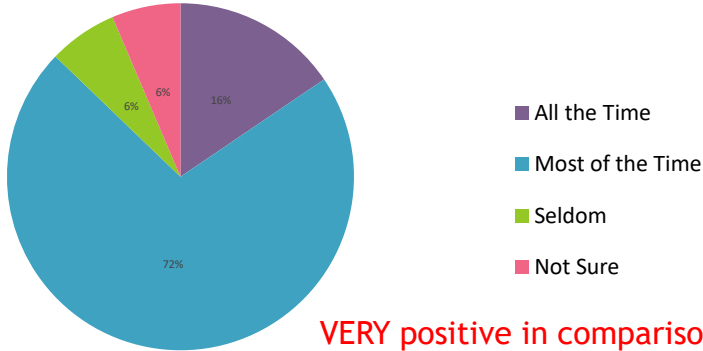
83% positive

7
CHURCH of the
TRANSFIGURATION
50 West Bloomingfield Road
Pittsford, New York 14534-9733

Church of Transfiguration 3- 5 Year Planning Process

Parishioner
On Line
Survey

Do I believe that the parish is on the right track?



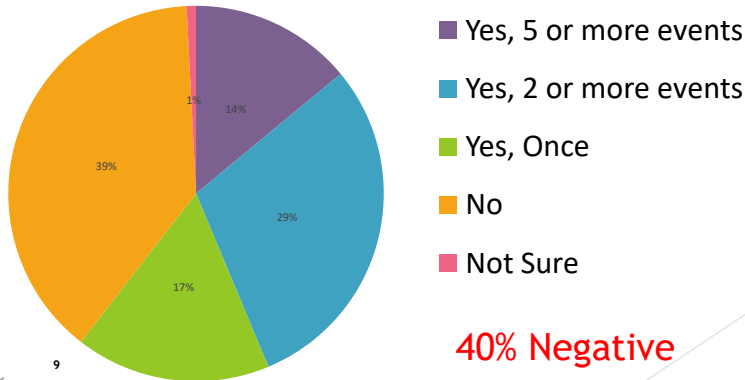
VERY positive in comparison to most churches - 88%

8
CHURCH of the
TRANSFIGURATION
50 West Blossfield Road
Pittsford, New York, 14534-9733

Church of Transfiguration 3- 5 Year Planning Process

Parishioner
On Line
Survey

Have I attended a parish function outside of Mass in the last 4 months?



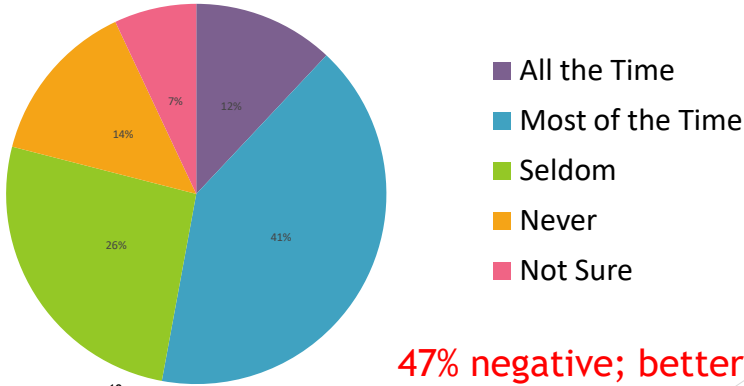
40% Negative

9
CHURCH of the
TRANSFIGURATION
50 West Blossfield Road
Pittsford, New York, 14534-9733

Church of Transfiguration 3- 5 Year Planning Process

Parishioner
On Line
Survey

Have I been personally called on by parish leadership to give of myself?



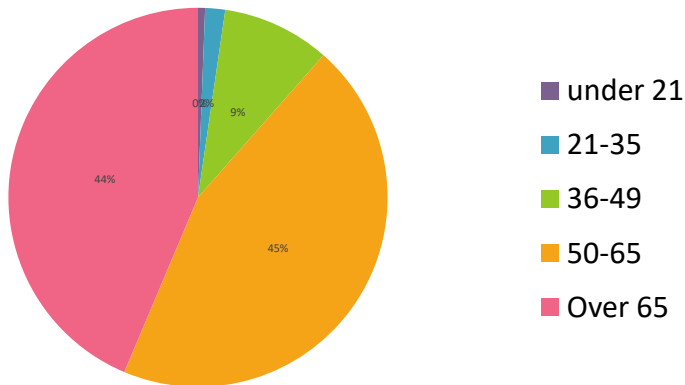
47% negative; better than many



Church of Transfiguration 3- 5 Year Planning Process

Parishioner
On Line
Survey

What is my age?



89% of the participants are over 50



Church of Transfiguration 3- 5 Year Planning Process

Parishioner
On Line
Survey

High Percentage Positive Feedback

- + Spiritually Lead At Parish
- + Meaningful Friendships In Parish
- + Opportunities For Services or Growth Appeal
- + Parish Leadership Care I Am Here
- + Greeted Warmly & Enjoy Attending Mass
- + My Faith Affects All Aspects Of My Life
- + View Parish As Mine
- + Parish On Right Track

Improvement Opportunities

- My Opinion Counts
- Often Share My Talents With Parish
- Attend Outside Mass Functions
- Personally Called By Parish Leadership Give Myself
- Survey Respondents, Current Age Over 50, 89%

Church of Transfiguration 3- 5 Year Planning Process

5 Sub Groups

Overview

